



Documentation for Hot folder

Table of Contents

Table of Contents	2
Hot folder	3
License	3
Hot folder tool 3.x compatibility	3
Hot folder tool 2.x compatibility	3
Hot folder tool 1.x compatibility	4
Download	4
Requirements	5
User guide 3.x	6
Configuration	6
Server Configuration:	6
Upload files to OpenKM	7
Log	8
User guide 2.x	9
Configuration	9
Server Configuration:	9
Folder Settings:	10
Upload files to OpenKM	10
Log	11
User guide 1.x	12
Configuration	12
Server Configuration:	12
Folder Settings:	13
Upload files to OpenKM	13
Log	14
Troubleshooting	15
After installing	15
Uninstall	15
Changelog v3.x	16
Hot Folder Tool 3.x	16
v3.5	16
v3.4	16
v3.3	16
v3.2	16
v3.1	16
Changelog v2.x	17
Hot Folder Tool 2.x	17
v2.2	17
v2.1	17
Changelog v1.x	18
Hot Folder Tool 1.x	18
v1.1	18
Language pack	19
Spanish translation	19
Create a new language	20
=	20

Hot folder

Hot folder tool allows the user to synchronize one or more local folders with others located in the OpenKM repository.

License



Hot folder tool for WINDOWS is licensed under the terms of the [EULA - OpenKM End User License Agreement](#) as published by OpenKM Knowledge Management System S.L.

This program is distributed WITHOUT ANY WARRANTY; without even the implied warranty of MERCHANTABILITY or FITNESS FOR A PARTICULAR PURPOSE. See the [EULA - OpenKM End User License Agreement](#) for more details.

Hot folder tool 3.x compatibility

App version	OpenKM Compatibility		Status
	Professional	Community	
3.5	Version 7.1.11 and upper.	Not compatible.	Active.
3.4	Version 7.1.9 and upper.	Not compatible.	Deprecated.
3.3	Version 7.1.8 and upper.	Not compatible.	Deprecated.
3.2	Version 7.1.4 and upper.	Not compatible.	Deprecated.
3.1	Version 7.1.4 and upper.	Not compatible.	Deprecated.
3.0	Version 7.1.4 and upper.	Not compatible.	Deprecated.

Hot folder tool 2.x compatibility

App version	OpenKM Compatibility		Status
	Professional	Community	

2.2	Version 6.4.45 and upper.	Not compatible.	Active.
2.1	Version 6.4.45 and upper.	Not compatible.	Deprecated.
2.0	Version 6.4.45 and upper.	Not compatible.	Deprecated.

Hot folder tool 1.x compatibility

App version	OpenKM Compatibility		Status
	Professional	Community	
1.1	Not compatible.	Version 6.3.7 and upper.	Active.
1.0	Not compatible.	Version 6.3.7 and upper.	Deprecated.

Download

- OpenKM Hot Folder Tool 3.5 is available at OpenKM download center.
- OpenKM Hot Folder Tool 3.4 is available at OpenKM download center.
- OpenKM Hot Folder Tool 3.3 is available at OpenKM download center.
- OpenKM Hot Folder Tool 3.2 is available at OpenKM download center.
- OpenKM Hot Folder Tool 3.1 is available at OpenKM download center.
- OpenKM Hot Folder Tool 3.0 is available at OpenKM download center.
- OpenKM Hot Folder Tool 2.2 is available at OpenKM download center.
- OpenKM Hot Folder Tool 2.1 is available at OpenKM download center.
- OpenKM Hot Folder Tool 2.0 is available at OpenKM download center.
- [OpenKM Hot Folder Tool 1.1](#)
- [OpenKM Hot Folder Tool 1.0](#)

Requirements

Before running the application, be sure you get installed Visual C++ Redistributable for Visual Studio.

- Visual C++ Redistributable for Visual Studio 2012 ([x86 or x64](#)) (Recommended).
- Windows installer 4.5.
- NET Framework 4.5.2 ([x86 or x64](#)).



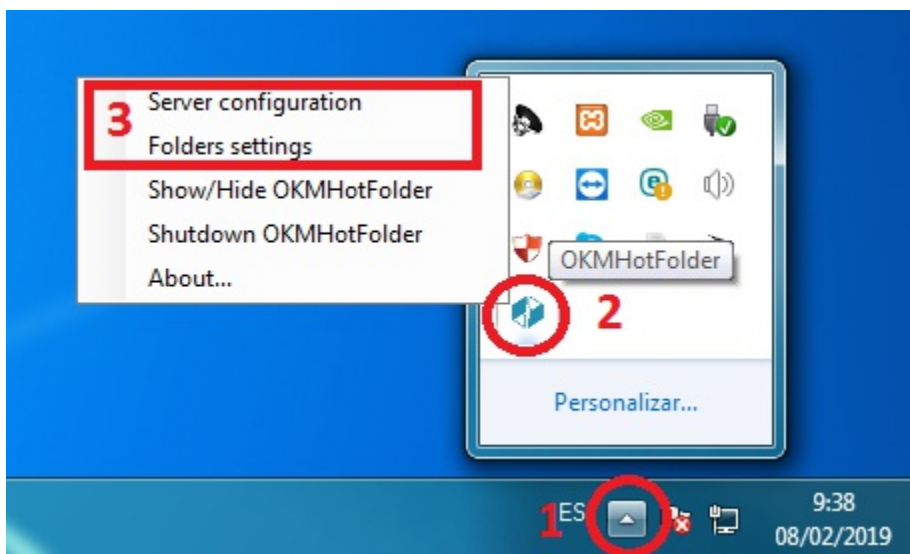
To **install** you must **run** "*setup.exe*" as **administrator**.

User guide 3.x

Hot folder tool allows the user to synchronize one or more local folders with others located in the OpenKM repository.

Configuration

1. Go to the notification area of the windows taskbar.
2. Click the right button of the Mouse on the OKMHotFolder icon.
3. Go to the "**Server configuration**" and "**Folder settings**" option.



Server Configuration:

First, you must choose the **Server configuration** menu item to set your configuration values:

Property	Type	Description
Language	Select	User interface language.
User	String	User id for accessing OpenKM. <input type="text" value="user1"/>
Password	String	The password of the user. <input type="text" value="pass1"/>
Host	String	OpenKM URL.

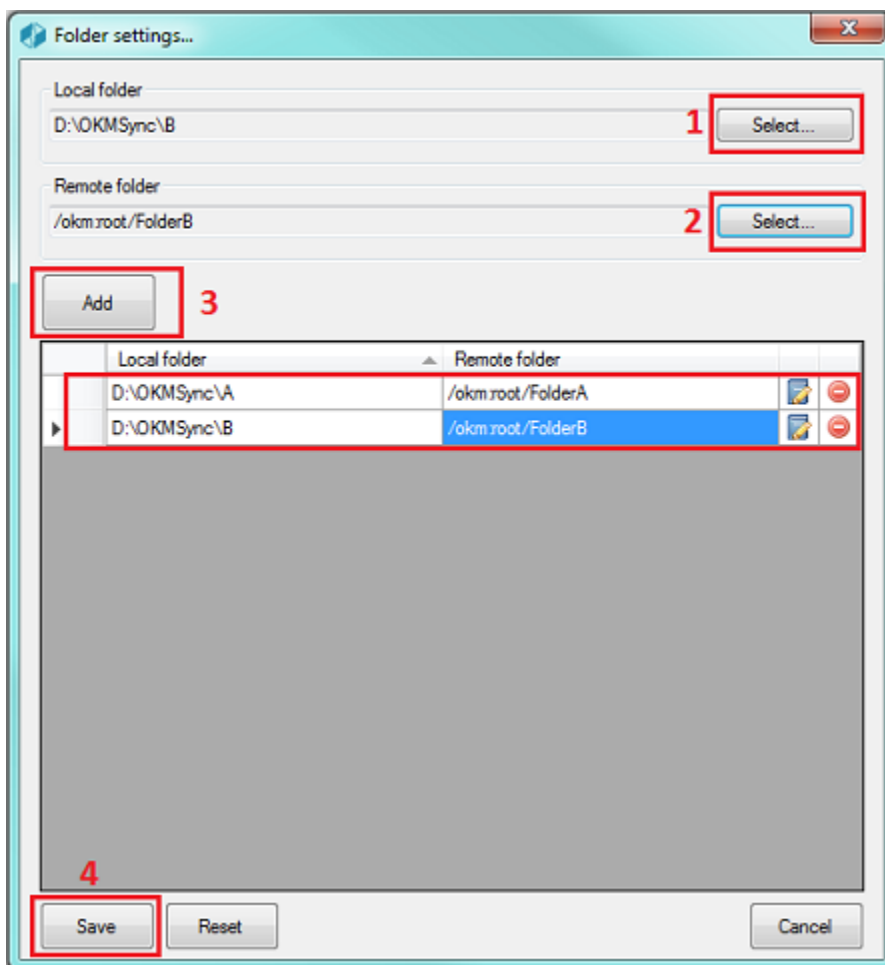
https://demo.openkm.com/openkm/



After you set your configuration values, a folder called **OpenKM** is created in your user **My documents folder**. In this OpenKM folder, a configuration there's a file named **openkm.xml**

Folder Settings:

1. Select a folder from your **local disk**.
2. Select a folder from the **OpenKM** repository.
3. Press the "**Add**" button (you can also edit or delete an item from the list).
4. Press the "**Save**" button.

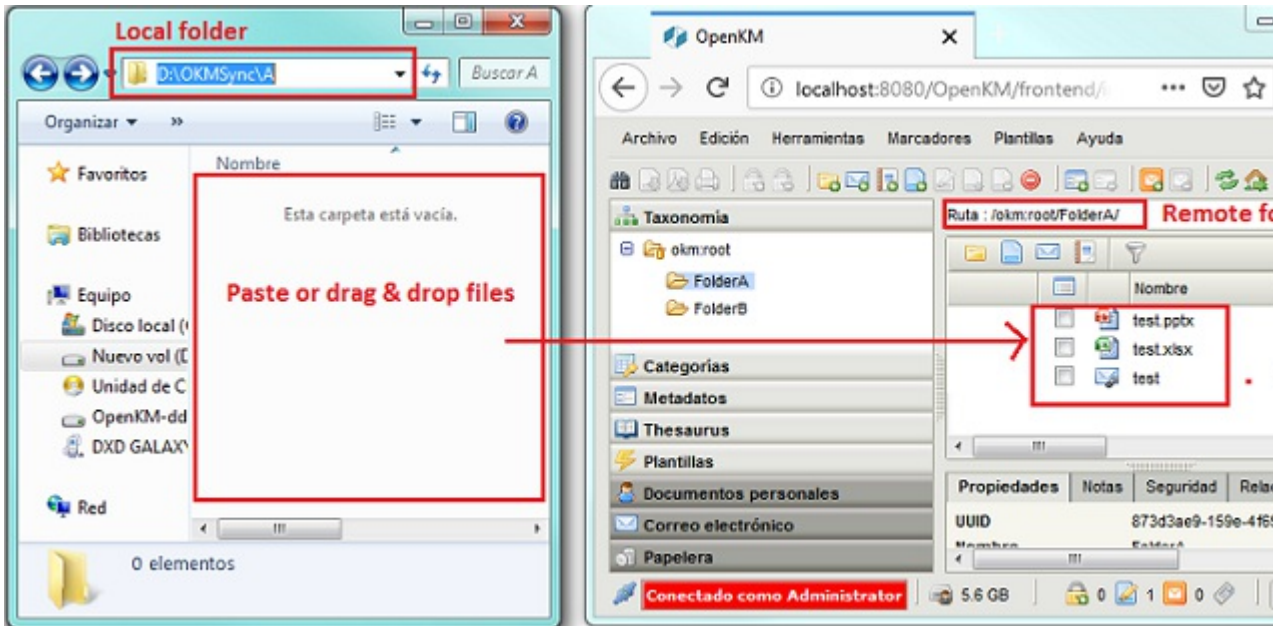


The "**Restart**" button - requires you accept the confirmation popup - will erase all the configuration.

Upload files to OpenKM

1. **Copy & paste** or **drag & drop** files into the local folder configured.

2. The files will be **uploaded to the configured OpenKM folder** and **will be deleted from the local disk**.
3. When the file already exists in the repository, you will be asked to update or not.



Log

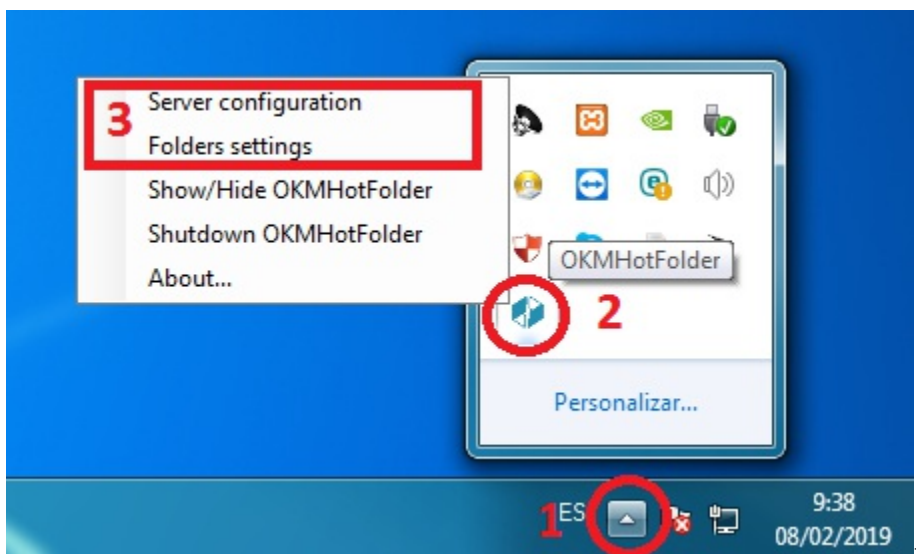
In **My Documents/OpenKM**, there's a file log called **OKMHotFolder.log** with a complete log trace.

User guide 2.x

Hot folder tool allows the user to synchronize one or more local folders with others located in the OpenKM repository.

Configuration

1. Go to the notification area of the windows taskbar.
2. Click the right button of the Mouse on the OKMHotFolder icon.
3. Go to the "**Server configuration**" and "**Folder settings**" option.



Server Configuration:

First, you must choose the **Server configuration** menu item to set your configuration values:

Property	Type	Description
Language	Select	User interface language.
User	String	User id for accessing OpenKM. <input type="text" value="user1"/>
Password	String	The password of the user. <input type="text" value="pass1"/>
Host	String	OpenKM URL.

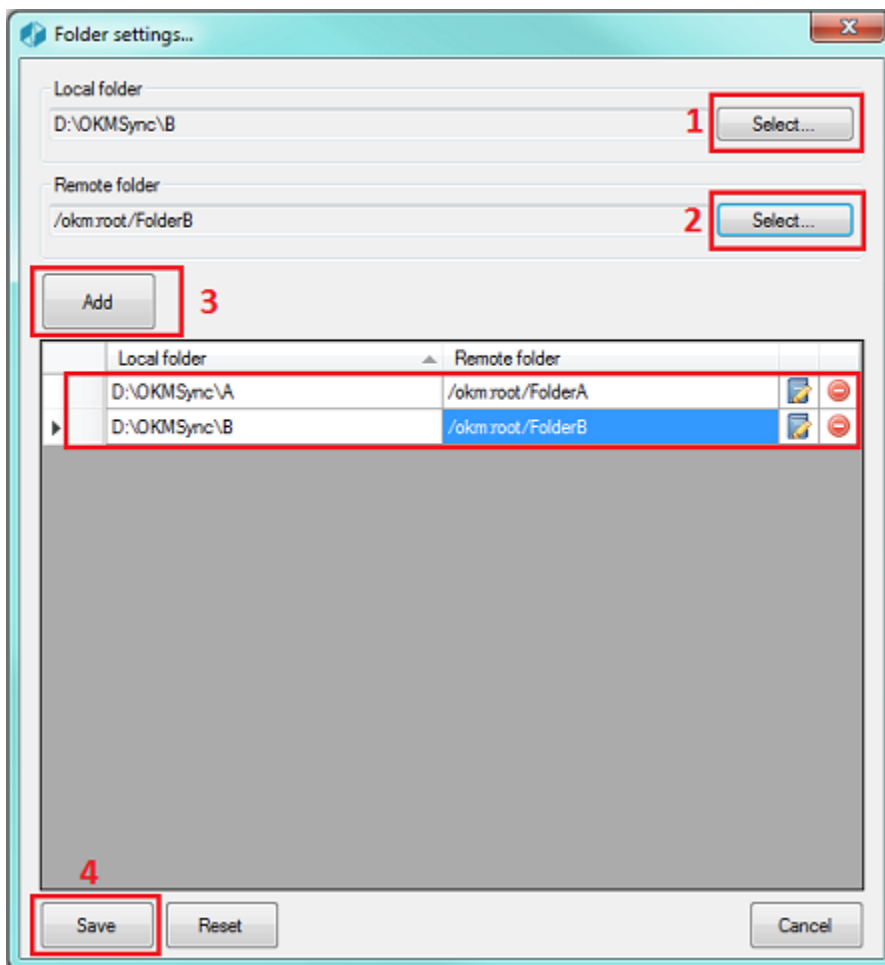
<https://demo.openkm.com/OpenKM/>



After you set your configuration values, a folder called **OpenKM** is created in your user **My documents folder**. In this OpenKM folder, a configuration there's a file named **openkm.xml**

Folder Settings:

1. Select a folder from your **local disk**.
2. Select a folder from the **OpenKM** repository.
3. Press the "**Add**" button (you can also edit or delete an item from the list).
4. Press the "**Save**" button.

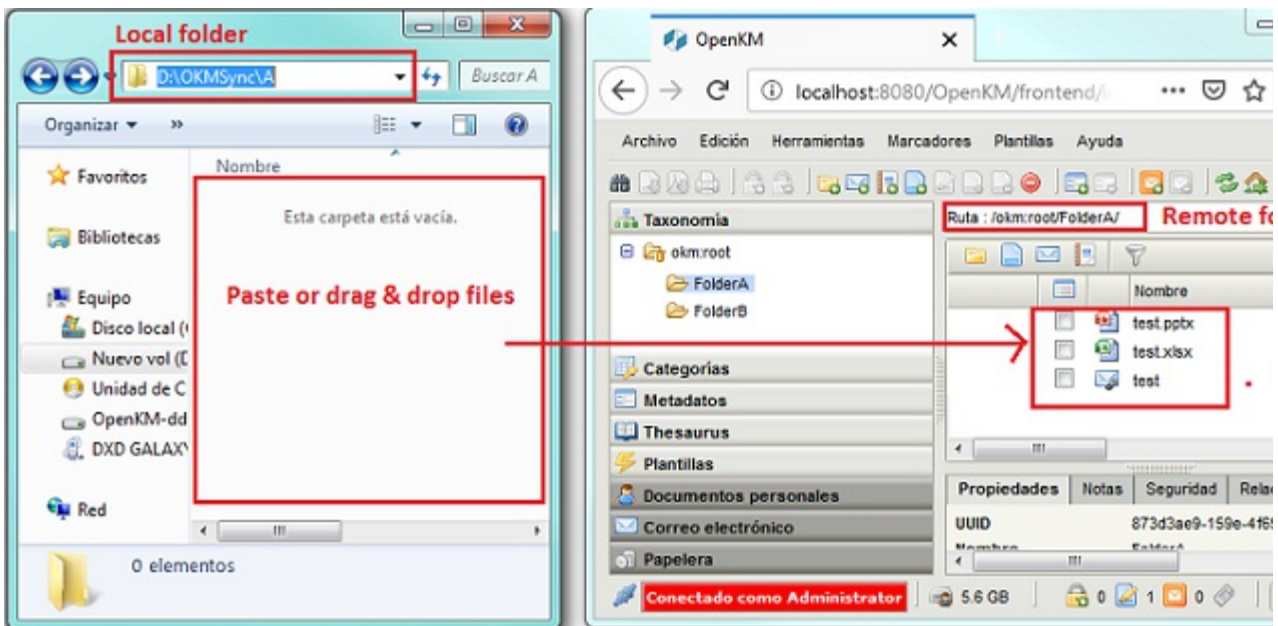


The "**Restart**" button - requires you accept the confirmation popup - will erase all the configuration.

Upload files to OpenKM

1. **Copy & paste** or **drag & drop** files into the local folder configured.

2. The files will be **uploaded to the configured OpenKM folder** and **will be deleted from the local disk**.
3. When the file already exists in the repository, you will be asked to update or not.



Log

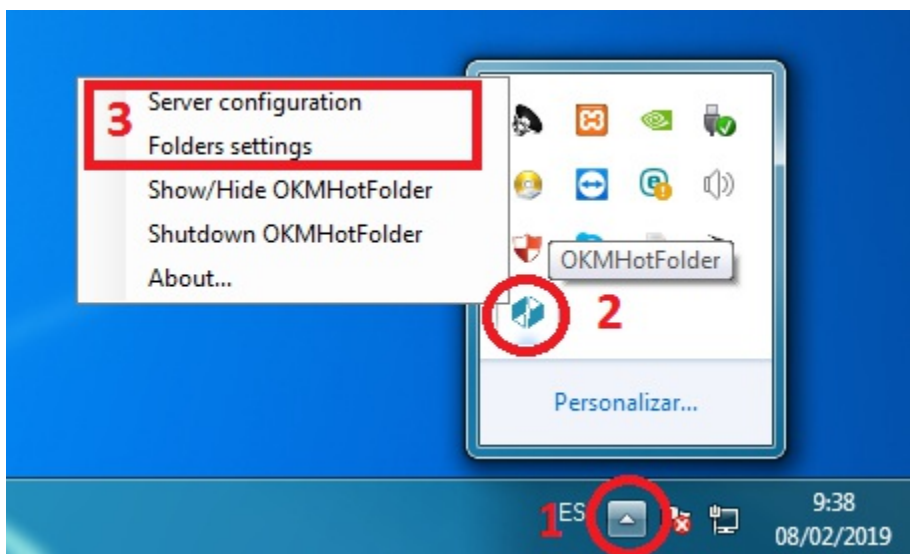
In **My Documents/OpenKM**, there's a file log called **OKMHotFolder.log** with a complete log trace.

User guide 1.x

Hot folder tool allows the user to synchronize one or more local folders with others located in the OpenKM repository.

Configuration

1. Go to the notification area of the windows taskbar.
2. Click the right button of the Mouse on the OKMHotFolder icon.
3. Go to the "**Server configuration**" and "**Folder settings**" option.



Server Configuration:

First, you must choose the **Server configuration** menu item to set your configuration values:

Property	Type	Description
Language	Select	User interface language.
User	String	User id for accessing OpenKM. <input type="text" value="user1"/>
Password	String	The password of the user. <input type="text" value="pass1"/>
Host	String	OpenKM URL.

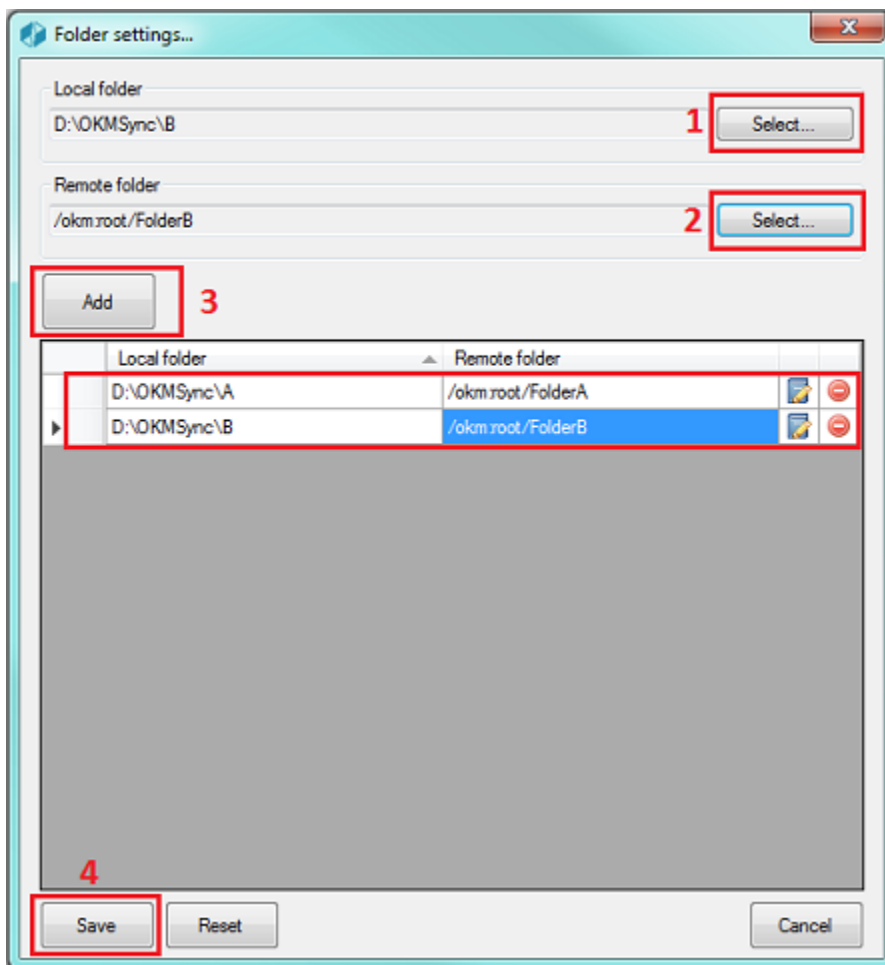
https://demo.openkm.com/OpenKM/



After you set your configuration values, a folder called **OpenKM** is created in your user **My documents folder**. In this OpenKM folder, a configuration there's a file named **openkm.xml**

Folder Settings:

1. Select a folder from your **local disk**.
2. Select a folder from the **OpenKM** repository.
3. Press the "**Add**" button (you can also edit or delete an item from the list).
4. Press the "**Save**" button.

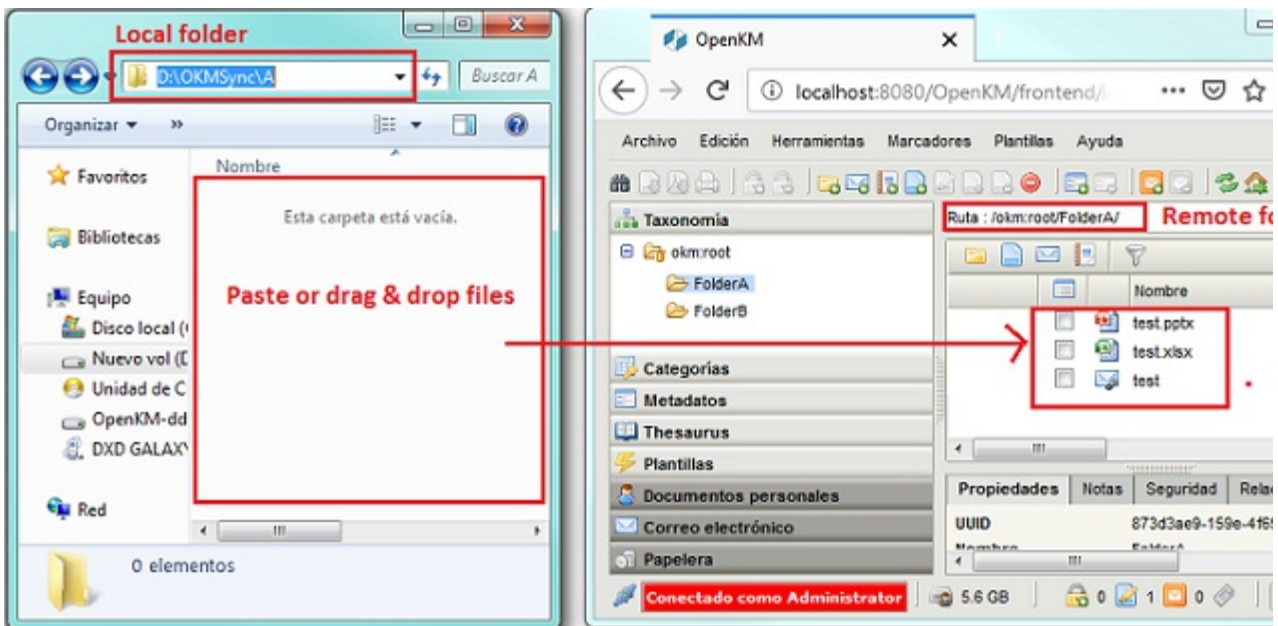


The "**Restart**" button - requires you accept the confirmation popup - will erase all the configuration.

Upload files to OpenKM

1. **Copy & paste** or **drag & drop** files into the local folder configured.

2. The files will be **uploaded to the configured OpenKM folder** and **will be deleted from the local disk**.
3. When the file already exists in the repository, you will be asked to update or not.



Log

In **My Documents/OpenKM**, there's a file log called **OKMHotFolder.log** with a complete log trace.

Troubleshooting

After installing



After installing the Hot FolderTool, is mandatory to restarting the operating system for proper operation.

Uninstall

Steps to **uninstall** the application correctly:

1. Go to the **Control Panel**, select the **Uninstall a program** option.
2. Look in the list for the application "**OKMHotFolderSetup**", and **uninstall** it.
3. If this is the case, select the option "**Automatically close the applications and try to restart them after completing the configuration**" and press the "**Accept**" button.

Changelog v3.x

Hot Folder Tool 3.x

v3.5

- Released 2020-04-17
- Update OKMRest version 3.7.0 (compatible with OpenKM version 7.1.11 and upper)

v3.4

- Released 2020-02-18
- Update OKMRest version 3.6.0 (compatible with OpenKM version 7.1.9 and upper)

v3.3

- Released 2019-11-25
- Update OKMRest version 3.5.0.

v3.2

- Released 2019-09-06
- Bugs
 - Failed to install when not finding OpenKM folder.

v3.1

- Released 2019-04-09
- Bugs
 - Validation of the host URL for methods using System.Net.Http in the SDK to .net.

Changelog v2.x

Hot Folder Tool 2.x

v2.2

- Released 2019-09-06
- Bugs
 - Failed to install when not finding OpenKM folder.

v2.1

- Released 2019-04-09
- Bugs
 - Validation of the host URL for methods using System.Net.Http in the SDK to .net.

Changelog v1.x

Hot Folder Tool 1.x

v1.1

- Released 2019-09-06
- Bugs
 - Failed to install when not finding OpenKM folder.

Language pack

The application can work with several languages, there are set the languages terms definitions.



Sometimes translations are not fully completed and some terms are missing. The "en-GB" is used to identify which are the missing terms and how many are.

When a term is missing in other languages the "en-GB" term is used in its place.



en-GB translation cannot be removed.

Spanish translation

```
# Main menu
mainmenu.showhide=Mostrar/Ocultar OKMHotFolder
mainmenu.shutdown=Apagar OKMHotFolder
mainmenu.configuration=Configuración del servidor
mainmenu.folder.settings=Configuración de carpetas
mainmenu.about=Acerca de...

# Button
button.add=Añadir
button.save=Guardar
button.reset=Reiniciar
button.update=Actualizar
button.select=Seleccionar
button.cancel=Cancelar
button.edit=Editar
button.delete=Borrar

# Folder settings form
form.folder.settings.title=Configuración de carpetas...
form.folder.settings.local=Carpeta local
form.folder.settings.remote=Carpeta remota

# Application messages
form.message.local.path.exists=La ruta local ya existe en la configuración, intente c
form.message.restart=Esta seguro de resetear todos los valores establecidos?
form.message.successful.upload=El documento ha sido subido exitosamente.
form.message.error.connection=No se pudo subir el documento, error de conexión con el
form.message.item.exists=El documento "{0}" ya existe en el repositorio "{1}", desea
message.required=Obligatorio
message.required.field=Faltan llenar campos.

# Form configuration
form.configuration.name=Configuración
form.configuration.language=Idioma
form.configuration.version=Versión de OpenKM
form.configuration.userName=Usuario
form.configuration.password=Clave
form.configuration.host=Host
form.configuration.error.msg=El campo {0} no puede ser vacío
form.configuration.button.accept=Aceptar
form.configuration.button.cancel=Cancelar
form.configuration.button.test=Prueba
form.configuration.test.ok=Conexión establecida con éxito
form.configuration.test.error=La prueba de conexión ha fallado!!!
```

```
form.configuration.connection.error=La conexión ha fallado!!!
form.configuration.label.request=Solicitar ruta para subir
form.configuration.label.path=Ruta por defecto

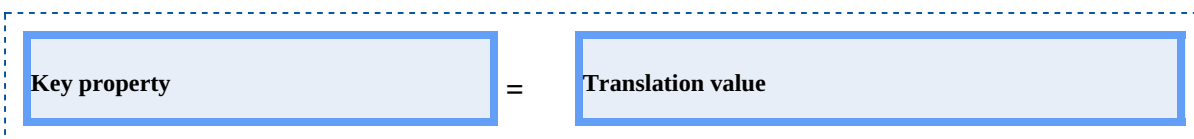
# Form tree
form.tree.title=Navegador
form.tree.context.root=Taxonomía
form.tree.context.templates=Plantillas
form.tree.context.personal=Personal
form.tree.contextmenu.newfolder=Nueva carpeta
form.tree.contextmenu.renamefolder=Renombrar carpeta
form.tree.contextmenu.deletefolder=Eliminar carpeta
form.tree.button.select=Seleccionar
form.tree.input.title=Gestión de carpetas
form.tree.button.refresh=Refrescar
form.tree.button.search=Buscar
form.tree.button.cancel=Cancelar
form.tree.msg.foldername.empty=Error, el nombre de la carpeta esta vacio

# Form search
form.search.title=Buscar
form.search.msg.min.char=Como mínimo debe escribir 3 caracteres
form.search.msg.empty=La consulta no ha devuelto ningún resultado
form.search.button.search=Buscar
form.search.button.cancel=Cancelar

# Explorer form
form.explorer.form.name=Editor de documentos
form.explorer.context.taxonomia=Taxonomía
form.explorer.context.plantilla=Templarios
form.explorer.context.usuario=Personal
form.explorer.button.edit=Editar
form.explorer.button.searchFolder=Buscar directorio
form.explorer.button.searchDoc=Buscar documento
form.explorer.button.exit=Salir
form.explorer.dataGrid.column.name=Nombre
form.explorer.dataGrid.column.author=Autor
form.explorer.dataGrid.column.version=Versión
form.explorer.dataGrid.column.date=Fecha
```

Create a new language

Language translations are displayed with the following structure.



To **create** a file with a new **language**, follow these steps:

1. Creates a new text document named **OKMHotFolder-xxXX** with the **.properties** extension, where **xxXX** refers to the **language identifier** (ISO 639).

For example in the case of the Spanish language, it would be esES (in English is enGB), that means the file must be named **OKMHotFolder-esES.properties**.



More information about [ISO 639](#).

2. Copy into the file created the example of the top of the Spanish translation. Each line of text it has sections, the "**Key property**" and "**Translation value**". The first one should not be changed and the second it refers to translated text and is what you should change.

For example:

```
# Configuration form
form.configuration.name=Configuration
form.configuration.language=Language
form.configuration.version=OpenKM Version
...
```

Replace by:

```
# Configuration form
form.configuration.name=Configuración
form.configuration.language=Idioma
form.configuration.version=OpenKM Versión
...
```

3. Save the file into **the installation folder**, located in: "C:\Program Files (x86)\OpenKM\OpenKM Digital Signature Client\" or the path you selected for installation.