



## Documentation for Digital Signature Tool

## Table of Contents

<b>Table of Contents</b>	<b>2</b>
<b>Digital Signature Tool</b>	<b>3</b>
License	3
Digital Signature Tool 3.x compatibility	3
Digital Signature Tool 2.x compatibility	3
Digital Signature Tool 1.x compatibility	4
Download	4
Requirements	6
User guide version 3.x	7
Configuration	7
Sign and upload documents	8
Sign documents within OpenKM	10
Log	11
User guide version 2.x	13
Configuration	13
Sign and upload documents	14
Sign documents within OpenKM	16
Log	17
User guide version 1.x	19
Configuration	19
Sign and upload documents	20
Log	22
Change log of version 3.x	23
Digital Signature Tool 3.x	23
v3.6	23
v3.5	23
v3.4	23
v3.3	23
v3.2	23
v3.1	23
Change log of version 2.x	24
Digital Signature Tool 2.x	24
v 2.4.2	24
v 2.4.1	24
v 2.4	24
v 2.3	24
v 2.2	24
v 2.1	24
v 2.0	25
Change log of version 1.x	26
Digital Signature Tool 1.x	26
v 1.1.0	26
Language pack	27
Spanish translation	27
Create a new language	28
=	28

# Digital Signature Tool

Digital Signature Clients allows to sign - digital signature - documents to OpenKM.

## License



**Digital Signature Tool for WINDOWS is licensed under the terms of the [EULA - OpenKM End User License Agreement](#) as published by OpenKM Knowledge Management System S.L.**

This program is distributed WITHOUT ANY WARRANTY; without even the implied warranty of MERCHANTABILITY or FITNESS FOR A PARTICULAR PURPOSE. See the [EULA - OpenKM End User License Agreement](#) for more details.

## Digital Signature Tool 3.x compatibility

Digital Signature tool version	OpenKM Compatibility		Status
	Professional	Community	
3.6	Version 7.1.11 and upper.	Not compatible.	Active.
3.5	Version 7.1.9 and upper.	Not compatible.	Deprecated.
3.4	Version 7.1.8 and upper.	Not compatible.	Deprecated.
3.3	Version 7.1.4 and upper.	Not compatible.	Deprecated.
3.2	Version 7.1.4 and upper.	Not compatible.	Deprecated.
3.1	Version 7.1.3 and upper.	Not compatible.	Deprecated.
3.0	Version 7.1.2 and upper.	Not compatible.	Deprecated.

## Digital Signature Tool 2.x compatibility

Digital Signature tool version	OpenKM Compatibility	Status

	Professional	Community	
2.4.2	Version 6.4.45 and upper.	Not compatible.	Active.
2.4.1	Version 6.4.45 and upper.	Not compatible.	Deprecated.
2.4	Version 6.4.45 and upper.	Not compatible.	Deprecated.
2.3	Version 6.4.31 to 6.4.44.	Not compatible.	Deprecated.
2.2	Version 6.4.31 to 6.4.44.	Not compatible.	Deprecated.
2.1	Version 6.4.31 to 6.4.44.	Not compatible.	Deprecated.
2.0	Version 6.4.26 to 6.4.44.	Not compatible.	Deprecated.

## Digital Signature Tool 1.x compatibility

Digital Signature tool version	OpenKM Compatibility		Status
	Professional	Community	
1.1.0	Not compatible.	Version 6.3.7 and upper.	Active.
1.0.2	Version 6.4.25 to 6.4.26.	Version 6.3.2 and upper.	Deprecated.
1.0.1	Version 6.4.1 to 6.4.25.	Version 6.3.2 and upper.	Deprecated

## Download

- OpenKM Digital Signature tool 3.6 available at OpenKM [Download center](#).
- OpenKM Digital Signature tool 3.5 available at OpenKM [Download center](#).
- OpenKM Digital Signature tool 3.4 available at OpenKM [Download center](#).
- OpenKM Digital Signature tool 3.3 available at OpenKM [Download center](#).

- 
- OpenKM Digital Signature tool 3.2 available at OpenKM [Download center](#).
  - OpenKM Digital Signature tool 3.1 available at OpenKM [Download center](#).
  - OpenKM Digital Signature tool 3.0 available at OpenKM [Download center](#).
  - OpenKM Digital Signature tool 2.4.2 available at OpenKM [Download center](#).
  - OpenKM Digital Signature tool 2.4 available at OpenKM [Download center](#).
  - OpenKM Digital Signature tool 2.3 available at OpenKM [Download center](#).
  - OpenKM Digital Signature tool 2.2 available at OpenKM [Download center](#).
  - OpenKM Digital Signature tool 2.1 available at OpenKM [Download center](#).
  - OpenKM Digital Signature tool 2.0 available at OpenKM [Download center](#).
  - [OpenKM Digital Signature tool 1.1.0](#)

## Requirements

---

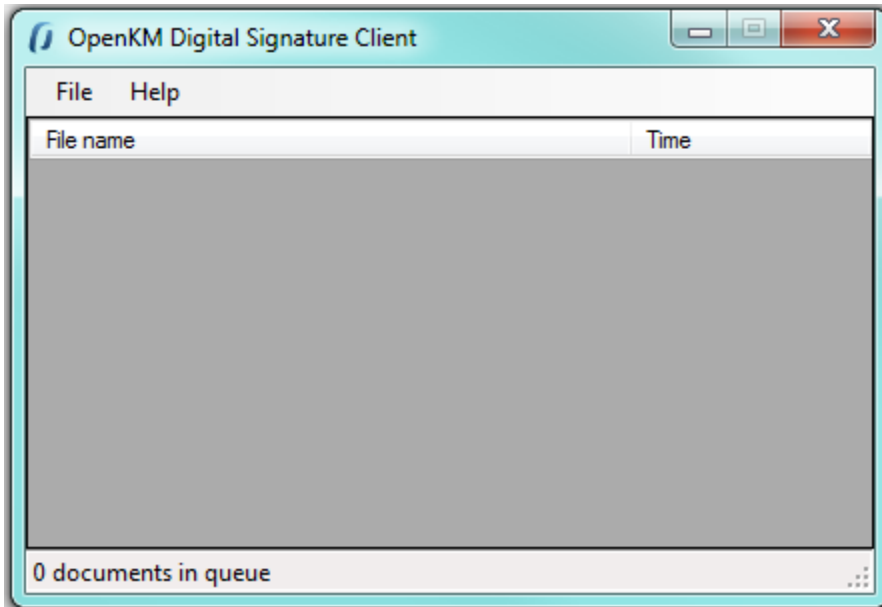
Before running the application be sure you get installed Visual C++ Redistributable for Visual Studio.

- Windows installer 4.5.
- NET Framework 4.5.2 ([x86 or x64](#)).
- Visual C++ Redistributable for Visual Studio 2012 ([x86 or x64](#)) ( Recommended ).

## User guide version 3.x

---

Digital Signature Clients allows signing - electronic digital signature - documents to OpenKM.

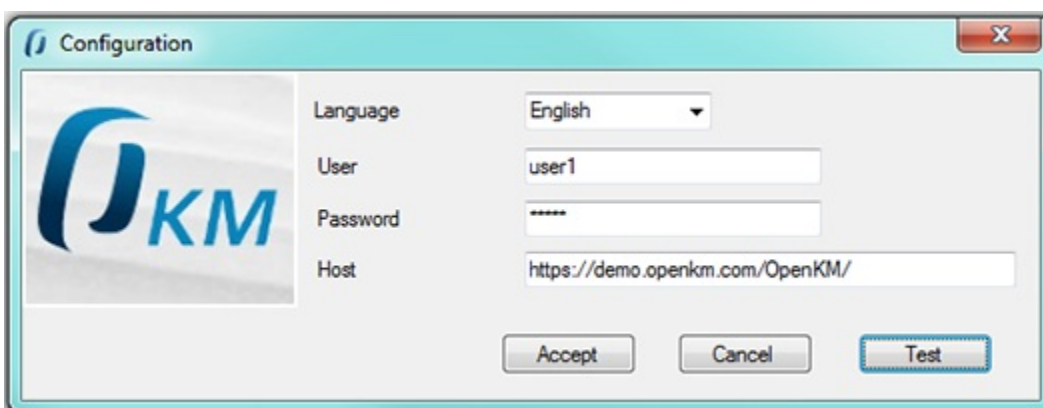


### Configuration

Choose **File / Configuration** menu option to show the configuration popup.

Configuration parameters available are:

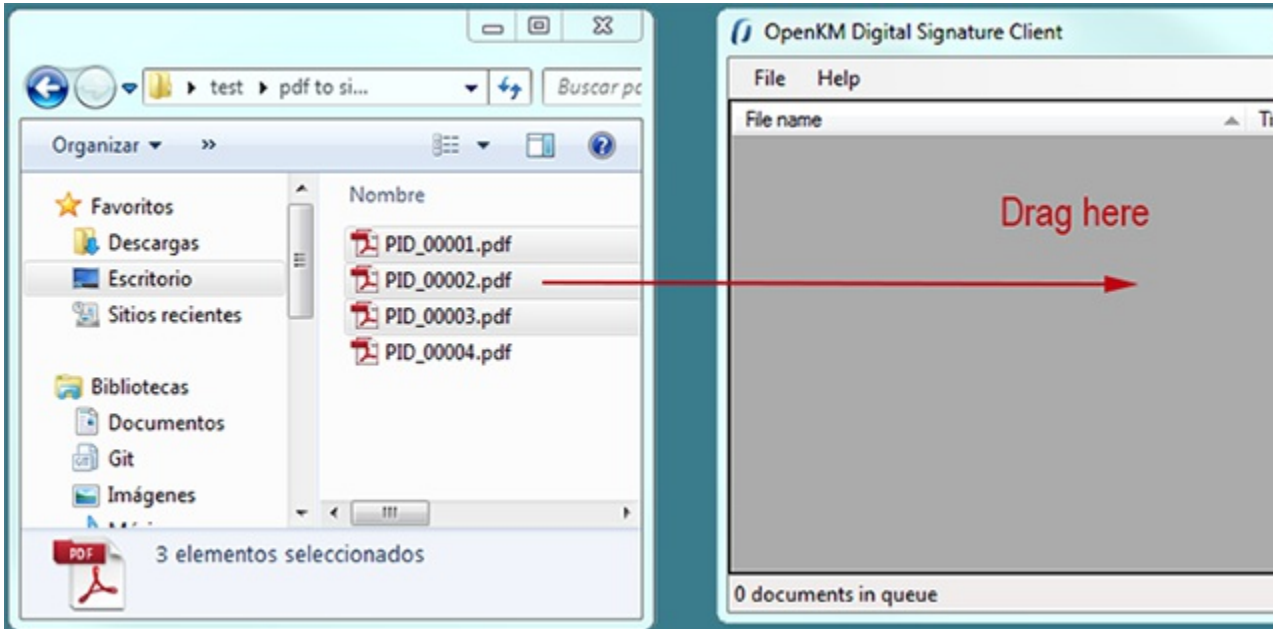
- User interface language.
- User and password to connect.
- The OpenKM server host.



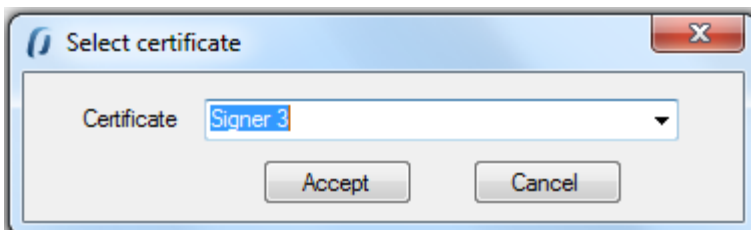
To accept configuration parameters changes, click **Accept** button.

## Sign and upload documents

To sign documents, **select some files or folders with files into and drag** to Digital Signature Client.

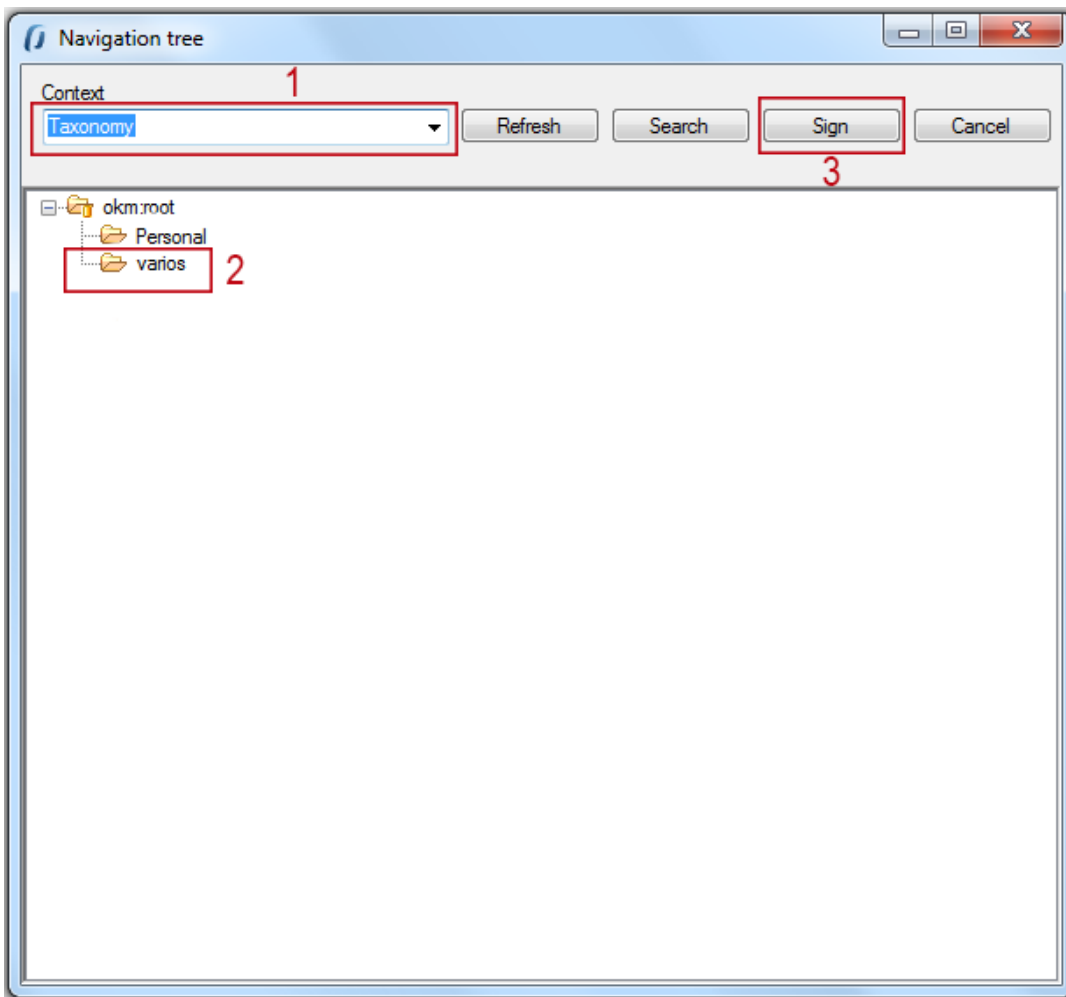


Will be shown a popup to **choose the certificate** what will be used to sign documents. **Choose a certificate** and click **Accept** button.

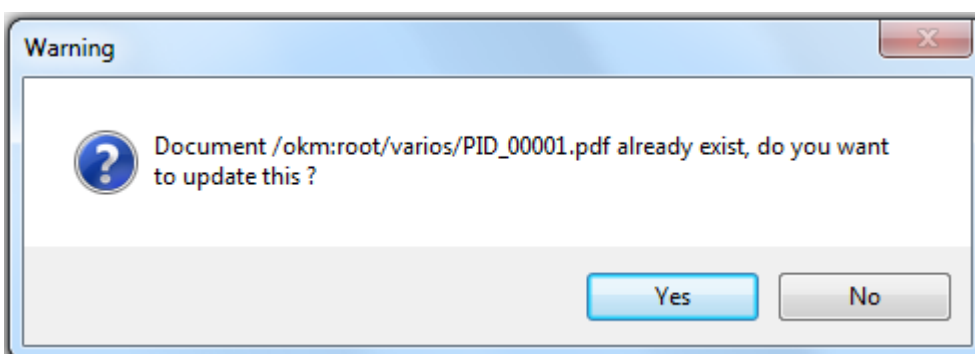


Finally, will be shown a navigator popup to **select documents folder destination**. **Select a folder with write access** ( for your user ) and click **Sign** button.

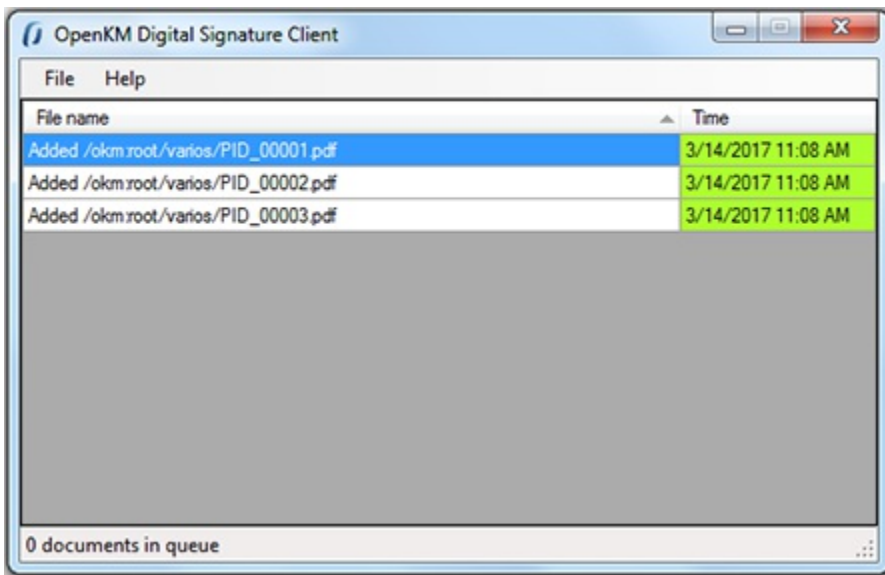




When Digital Signature Client detects an existing document with the same name into OpenKM is prompt a popup to choose one of these two options, updated the file or skip it.

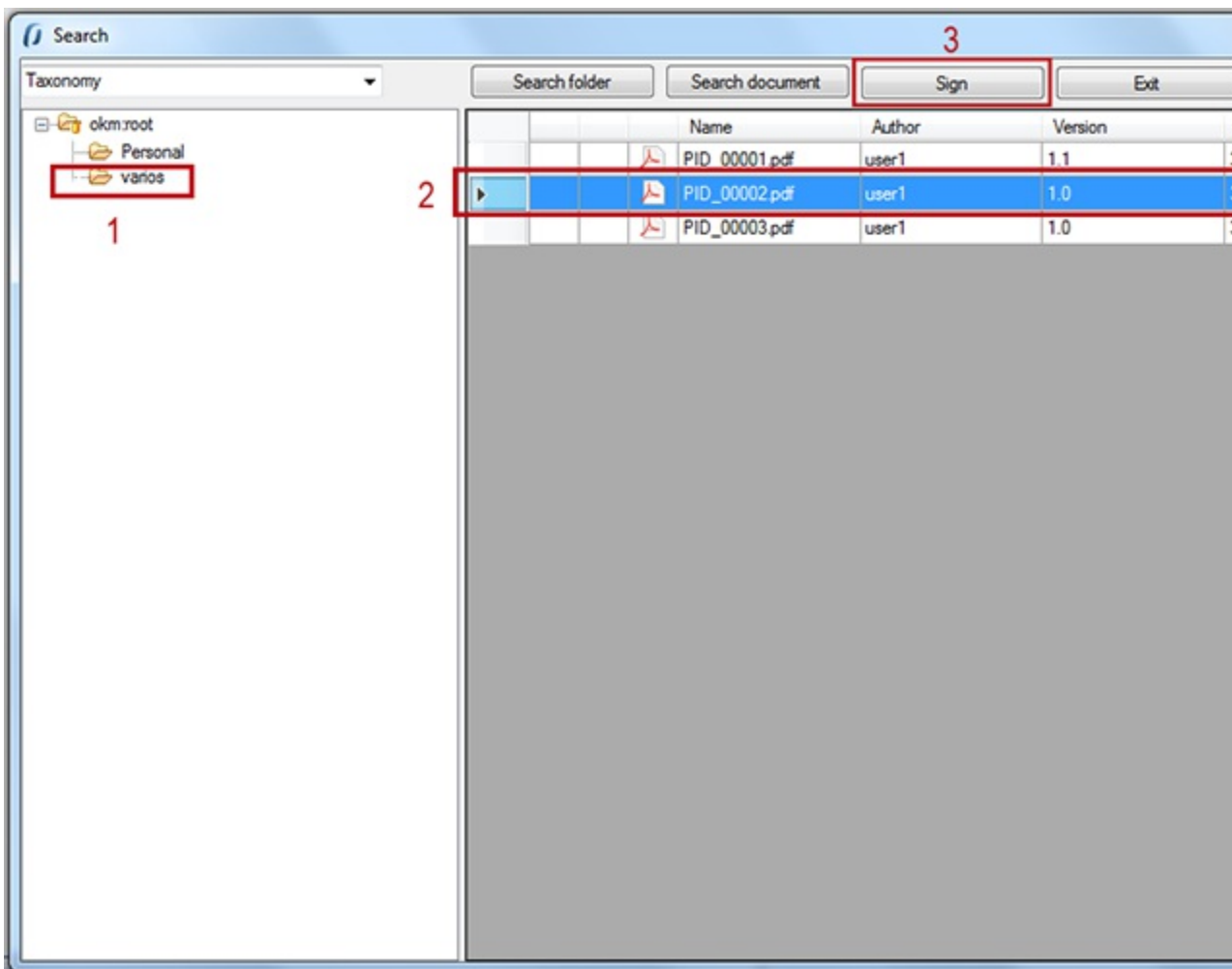


Information about signing and uploading process is shown in Digital Signature Client main table.

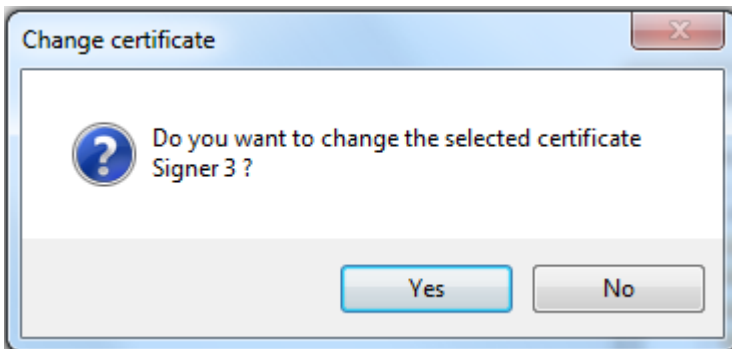


### Sign documents within OpenKM

Choose **File / Search** menu option to show the search popup.

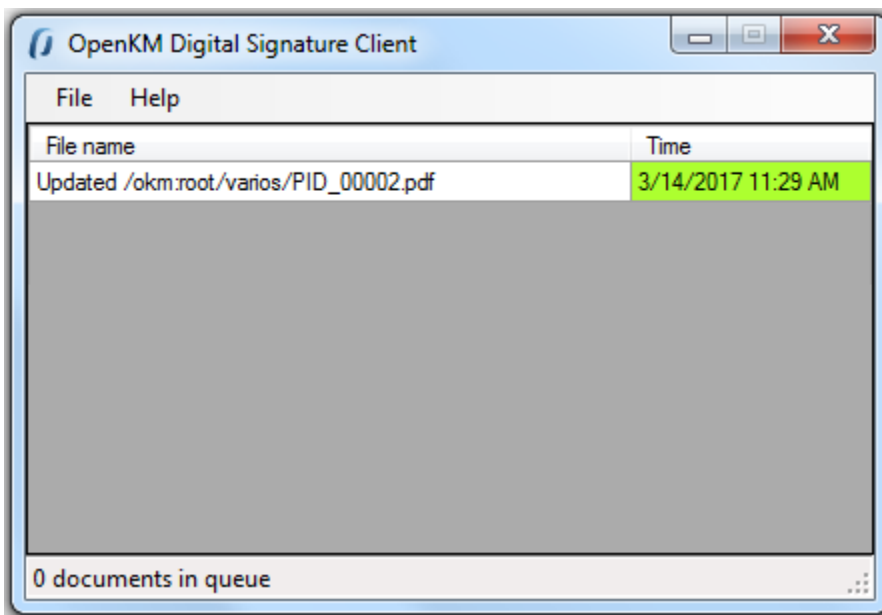


Select the document and click **Sign** button.



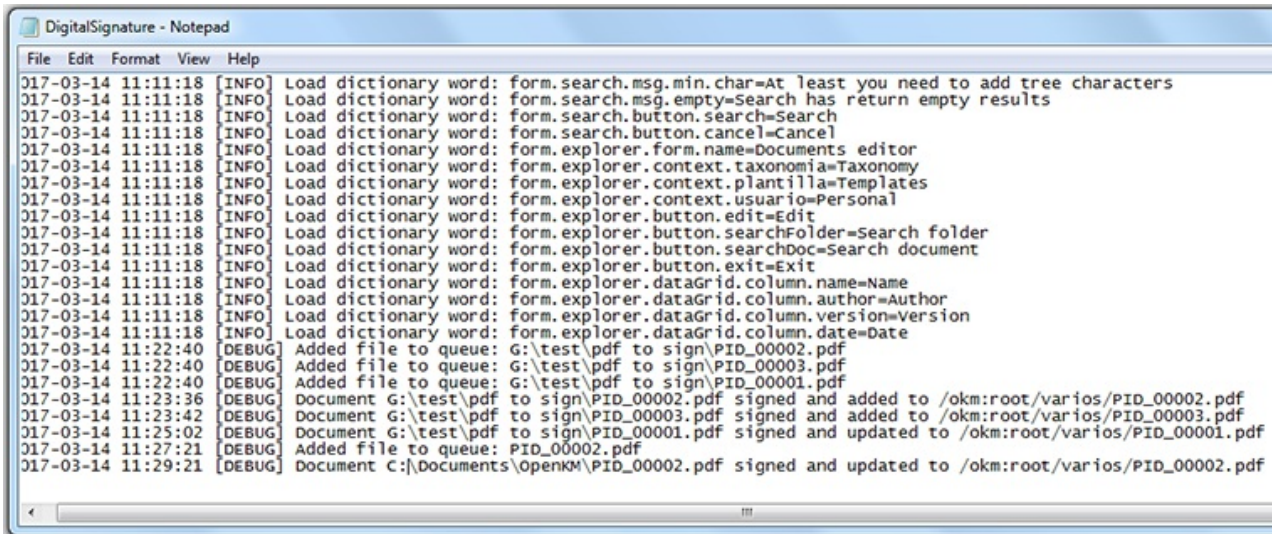
**i** If you want to change the signature certificate click Yes button.

Information about signing process is shown in Digital Signature Client table.



## Log

In **My Documents/OpenKM** there's a file log called DigitalSignature.log with a complete log trace.

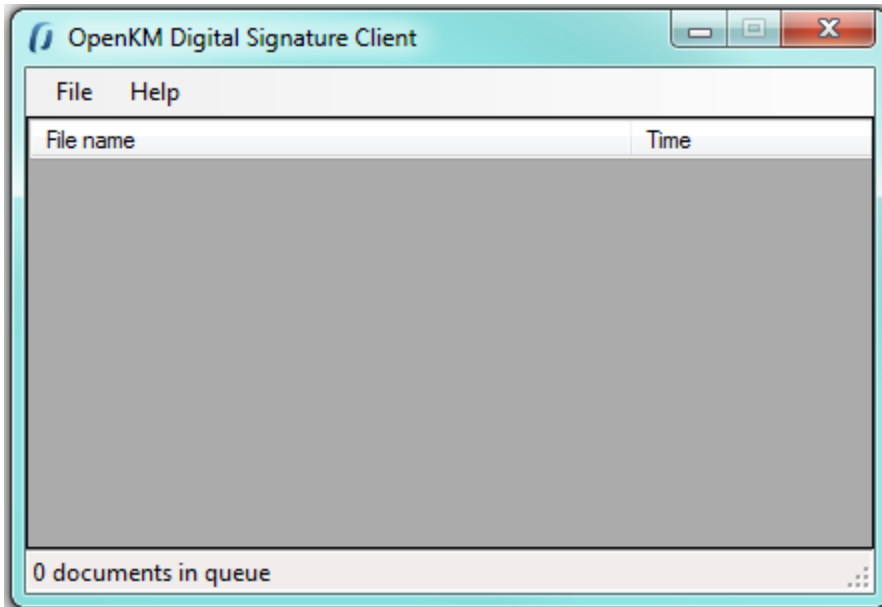


```
017-03-14 11:11:18 [INFO] Load dictionary word: form.search.msg.min.char=At least you need to add tree characters
017-03-14 11:11:18 [INFO] Load dictionary word: form.search.msg.empty=Search has return empty results
017-03-14 11:11:18 [INFO] Load dictionary word: form.search.button.search=Search
017-03-14 11:11:18 [INFO] Load dictionary word: form.search.button.cancel=cancel
017-03-14 11:11:18 [INFO] Load dictionary word: form.explorer.form.name=Documents editor
017-03-14 11:11:18 [INFO] Load dictionary word: form.explorer.context.taxonomia=Taxonomy
017-03-14 11:11:18 [INFO] Load dictionary word: form.explorer.context.plantilla=Templates
017-03-14 11:11:18 [INFO] Load dictionary word: form.explorer.context.usuario=Personal
017-03-14 11:11:18 [INFO] Load dictionary word: form.explorer.button.edit=Edit
017-03-14 11:11:18 [INFO] Load dictionary word: form.explorer.button.searchFolder=Search folder
017-03-14 11:11:18 [INFO] Load dictionary word: form.explorer.button.searchDoc=Search document
017-03-14 11:11:18 [INFO] Load dictionary word: form.explorer.button.exit=Exit
017-03-14 11:11:18 [INFO] Load dictionary word: form.explorer.dataGrid.column.name=Name
017-03-14 11:11:18 [INFO] Load dictionary word: form.explorer.dataGrid.column.author=Author
017-03-14 11:11:18 [INFO] Load dictionary word: form.explorer.dataGrid.column.version=Version
017-03-14 11:11:18 [INFO] Load dictionary word: form.explorer.dataGrid.column.date=Date
017-03-14 11:22:40 [DEBUG] Added file to queue: G:\test\pdf to sign\PID_00002.pdf
017-03-14 11:22:40 [DEBUG] Added file to queue: G:\test\pdf to sign\PID_00003.pdf
017-03-14 11:22:40 [DEBUG] Added file to queue: G:\test\pdf to sign\PID_00001.pdf
017-03-14 11:23:36 [DEBUG] Document G:\test\pdf to sign\PID_00002.pdf signed and added to /okm:root/varios/PID_00002.pdf
017-03-14 11:23:42 [DEBUG] Document G:\test\pdf to sign\PID_00003.pdf signed and added to /okm:root/varios/PID_00003.pdf
017-03-14 11:25:02 [DEBUG] Document G:\test\pdf to sign\PID_00001.pdf signed and updated to /okm:root/varios/PID_00001.pdf
017-03-14 11:27:21 [DEBUG] Added file to queue: PID_00002.pdf
017-03-14 11:29:21 [DEBUG] Document C:\Documents\OpenKM\PID_00002.pdf signed and updated to /okm:root/varios/PID_00002.pdf
```

## User guide version 2.x

---

Digital Signature Clients allows signing - electronic digital signature - documents to OpenKM.

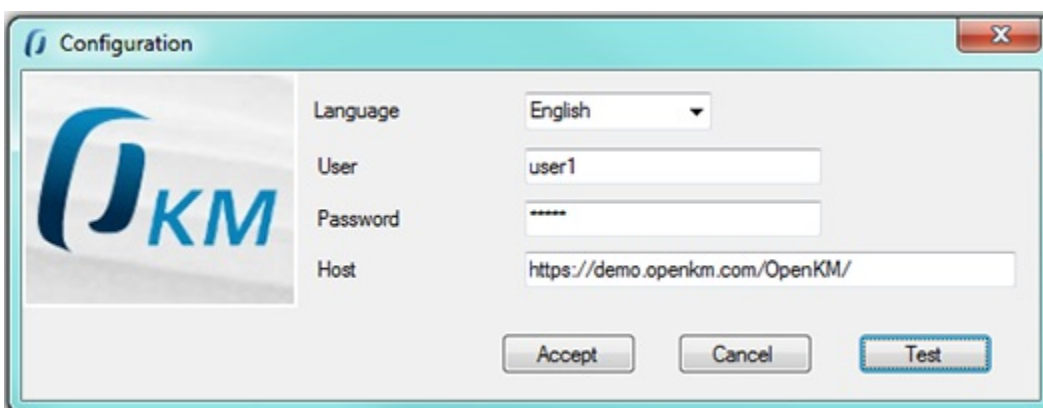


### Configuration

Choose **File / Configuration** menu option to show the configuration popup.

Configuration parameters available are:

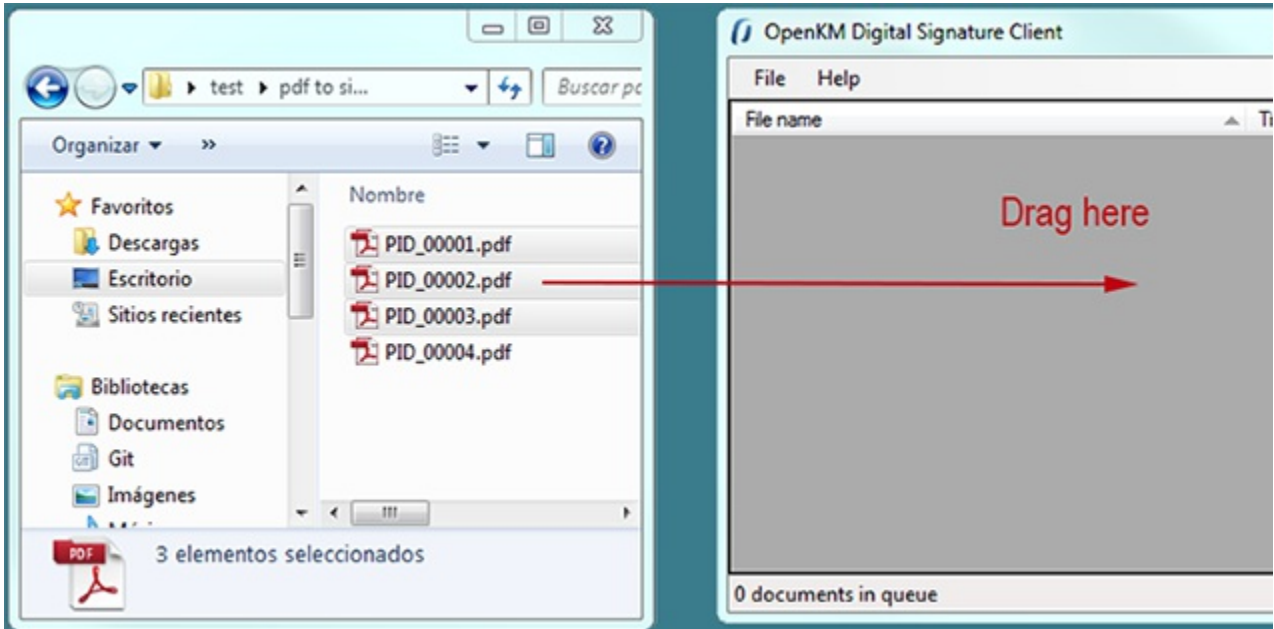
- User interface language.
- User and password to connect.
- The OpenKM server host.



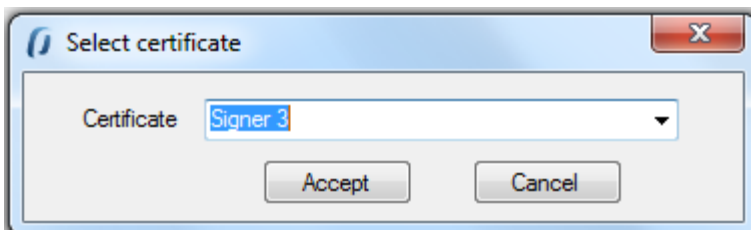
To accept configuration parameters changes, click **Accept** button.

## Sign and upload documents

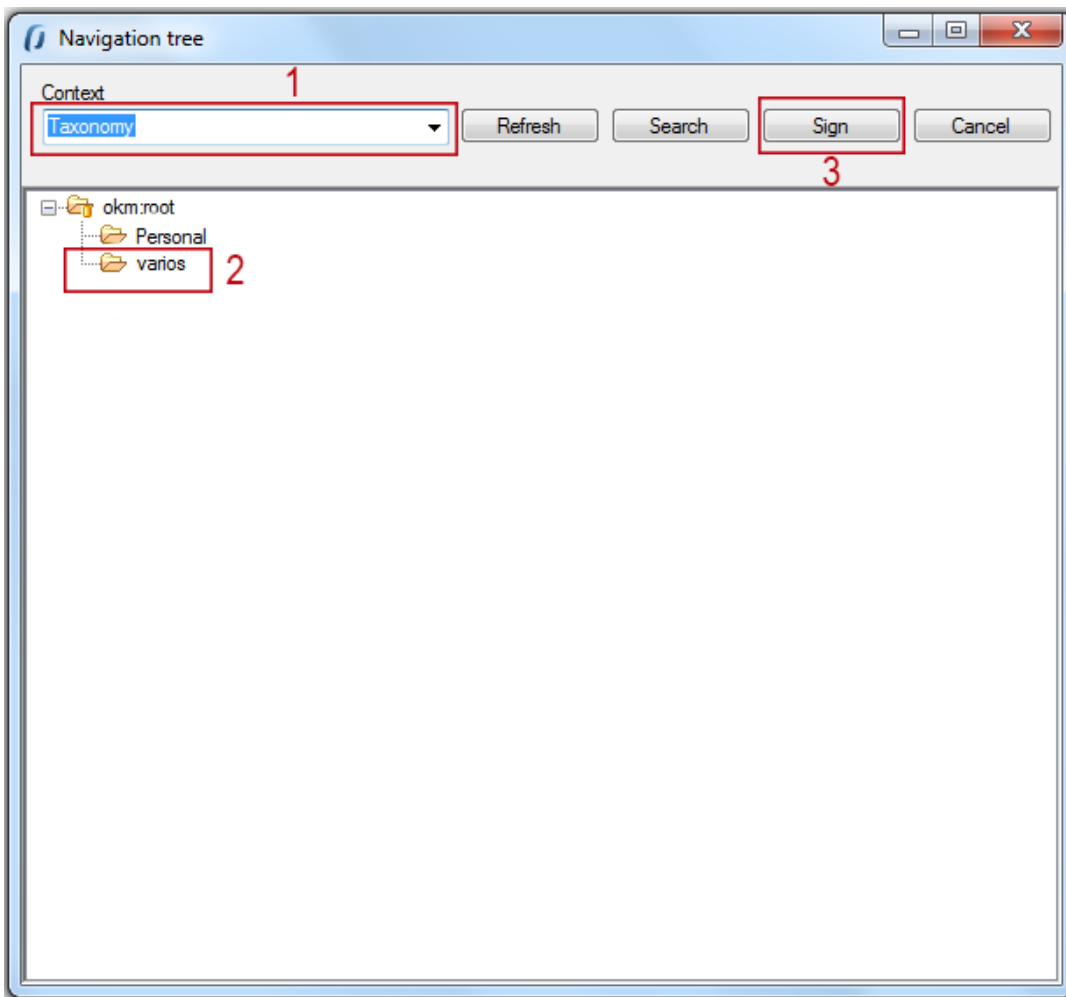
To sign documents, **select some files or folders with files into and drag** to Digital Signature Client.



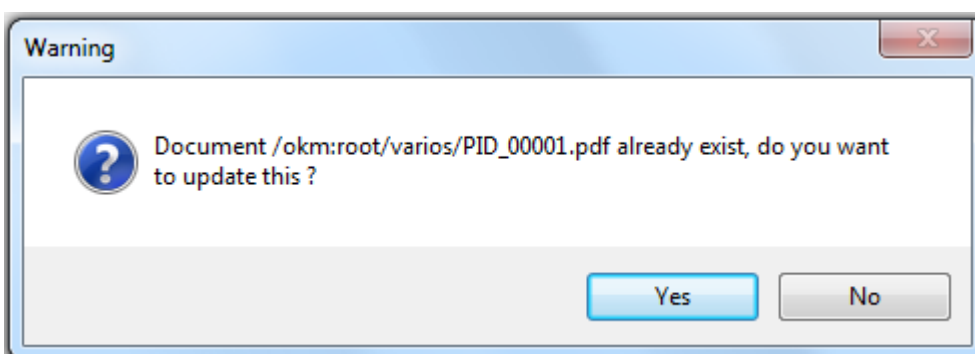
Will be shown a popup to **choose the certificate** what will be used to sign documents. **Choose a certificate** and click **Accept** button.



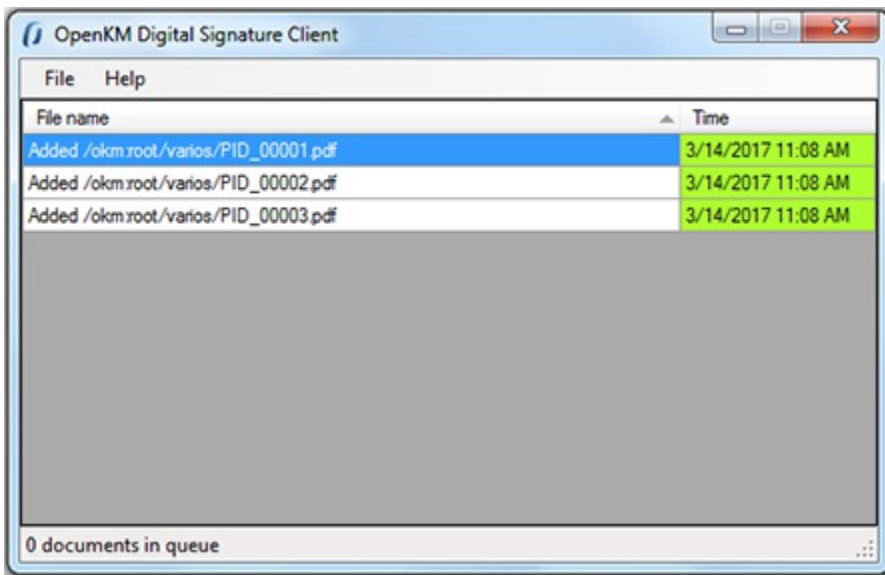
Finally, will be shown a navigator popup to **select documents folder destination**. **Select a folder with write access** ( for your user ) and click **Sign** button.



When Digital Signature Client detects an existing document with the same name into OpenKM is prompt a popup to choose one of these two options, updated the file or skip it.

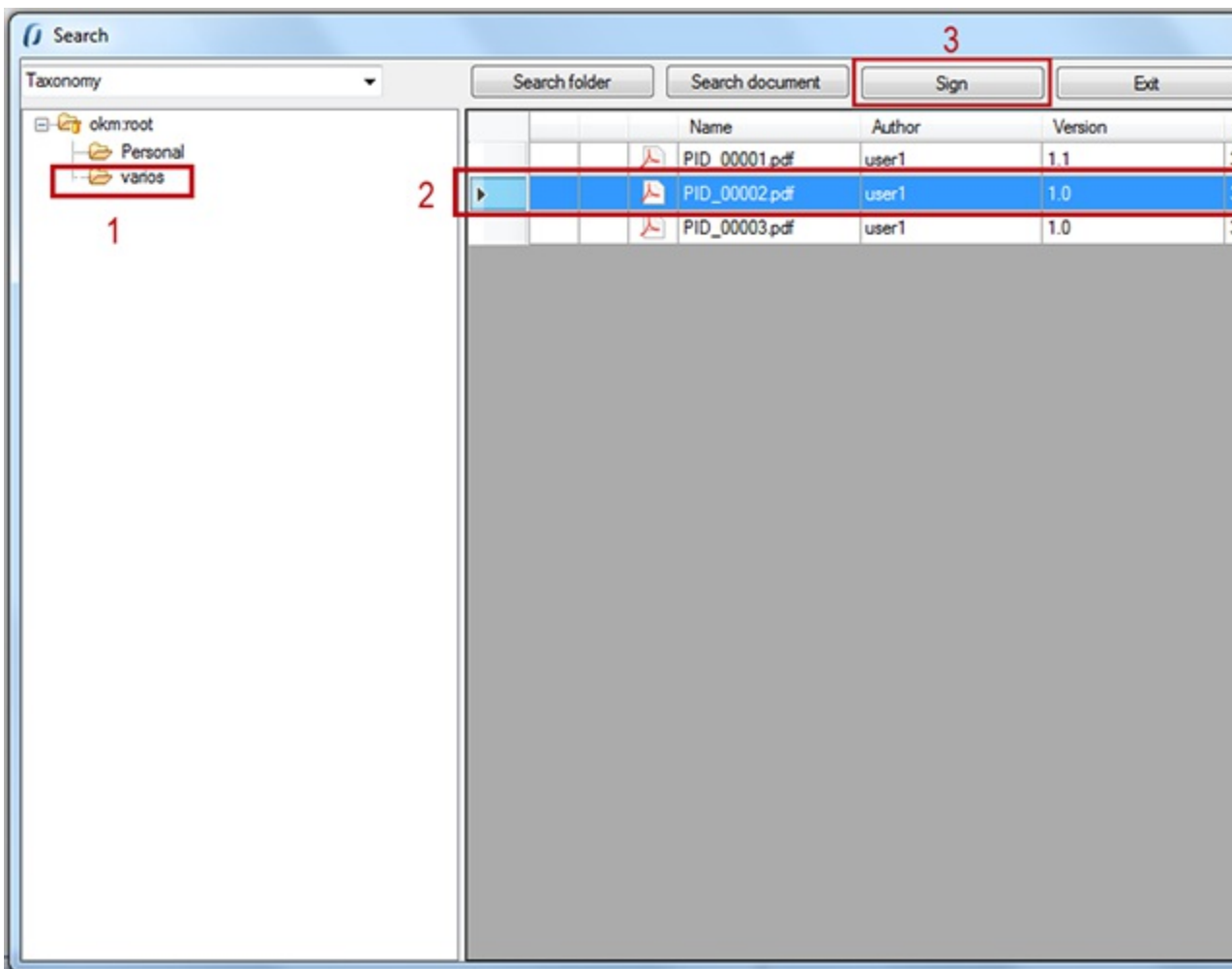


Information about signing and uploading process is shown in Digital Signature Client main table.



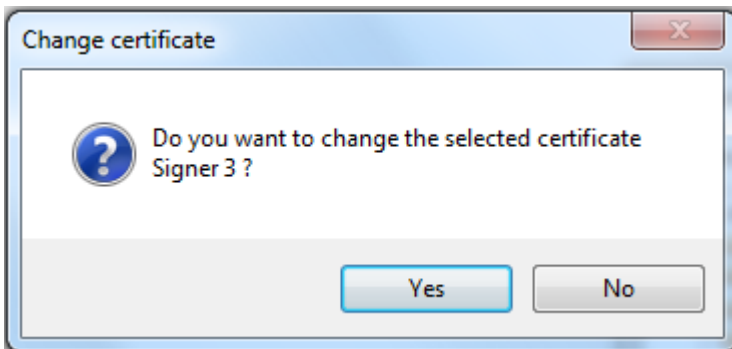
### Sign documents within OpenKM

Choose **File / Search** menu option to show the search popup.



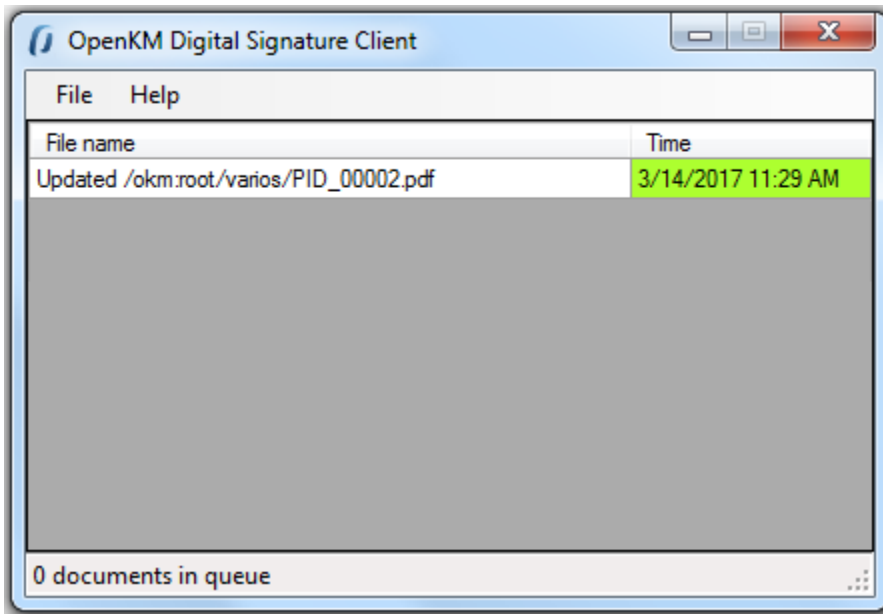


Select the document and click **Sign** button.



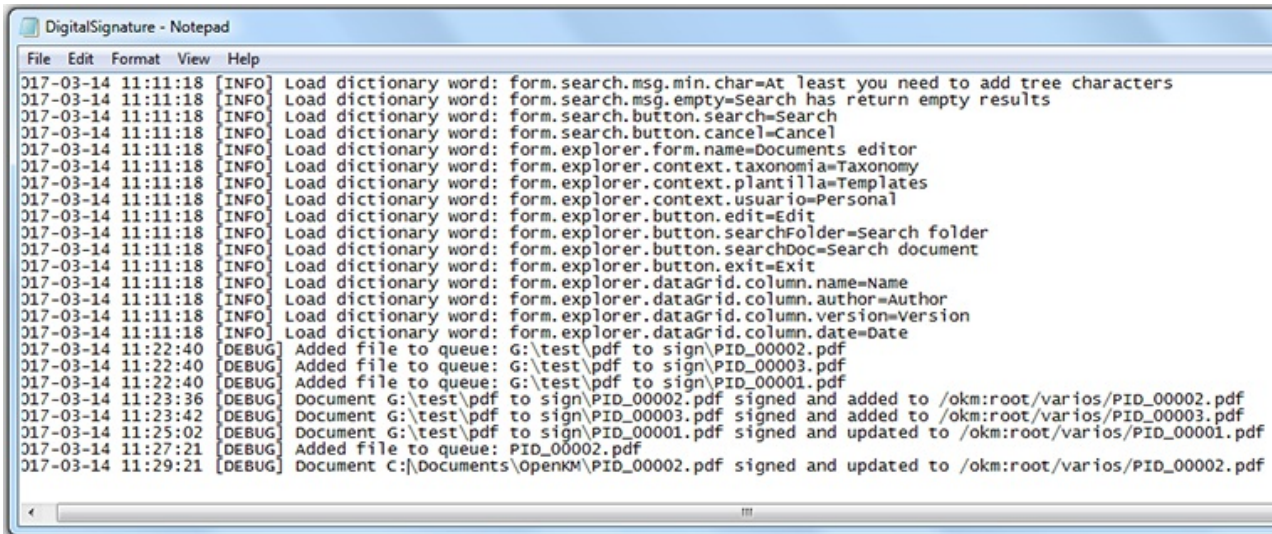
**i** If you want to change the signature certificate click Yes button.

Information about signing process is shown in Digital Signature Client table.



## Log

In **My Documents/OpenKM** there's a file log called DigitalSignature.log with a complete log trace.

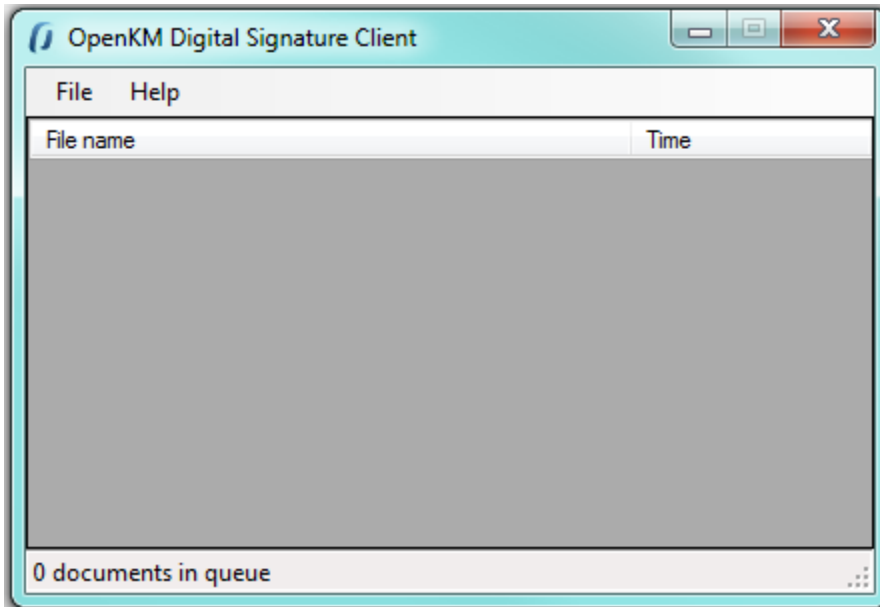


```
File Edit Format View Help
017-03-14 11:11:18 [INFO] Load dictionary word: form.search.msg.min.char=At least you need to add tree characters
017-03-14 11:11:18 [INFO] Load dictionary word: form.search.msg.empty=Search has return empty results
017-03-14 11:11:18 [INFO] Load dictionary word: form.search.button.search=Search
017-03-14 11:11:18 [INFO] Load dictionary word: form.search.button.cancel=cancel
017-03-14 11:11:18 [INFO] Load dictionary word: form.explorer.form.name=Documents editor
017-03-14 11:11:18 [INFO] Load dictionary word: form.explorer.context.taxonomia=Taxonomy
017-03-14 11:11:18 [INFO] Load dictionary word: form.explorer.context.plantilla=Templates
017-03-14 11:11:18 [INFO] Load dictionary word: form.explorer.context.usuario=Personal
017-03-14 11:11:18 [INFO] Load dictionary word: form.explorer.button.edit=Edit
017-03-14 11:11:18 [INFO] Load dictionary word: form.explorer.button.searchFolder=Search folder
017-03-14 11:11:18 [INFO] Load dictionary word: form.explorer.button.searchDoc=Search document
017-03-14 11:11:18 [INFO] Load dictionary word: form.explorer.button.exit=Exit
017-03-14 11:11:18 [INFO] Load dictionary word: form.explorer.dataGrid.column.name=Name
017-03-14 11:11:18 [INFO] Load dictionary word: form.explorer.dataGrid.column.author=Author
017-03-14 11:11:18 [INFO] Load dictionary word: form.explorer.dataGrid.column.version=Version
017-03-14 11:11:18 [INFO] Load dictionary word: form.explorer.dataGrid.column.date=Date
017-03-14 11:22:40 [DEBUG] Added file to queue: G:\test\pdf to sign\PID_00002.pdf
017-03-14 11:22:40 [DEBUG] Added file to queue: G:\test\pdf to sign\PID_00003.pdf
017-03-14 11:22:40 [DEBUG] Added file to queue: G:\test\pdf to sign\PID_00001.pdf
017-03-14 11:23:36 [DEBUG] Document G:\test\pdf to sign\PID_00002.pdf signed and added to /okm:root/varios/PID_00002.pdf
017-03-14 11:23:42 [DEBUG] Document G:\test\pdf to sign\PID_00003.pdf signed and added to /okm:root/varios/PID_00003.pdf
017-03-14 11:25:02 [DEBUG] Document G:\test\pdf to sign\PID_00001.pdf signed and updated to /okm:root/varios/PID_00001.pdf
017-03-14 11:27:21 [DEBUG] Added file to queue: PID_00002.pdf
017-03-14 11:29:21 [DEBUG] Document C:\Documents\OpenKM\PID_00002.pdf signed and updated to /okm:root/varios/PID_00002.pdf
```

## User guide version 1.x

---

Digital Signature Clients allows signing - electronic digital signature - documents to OpenKM.

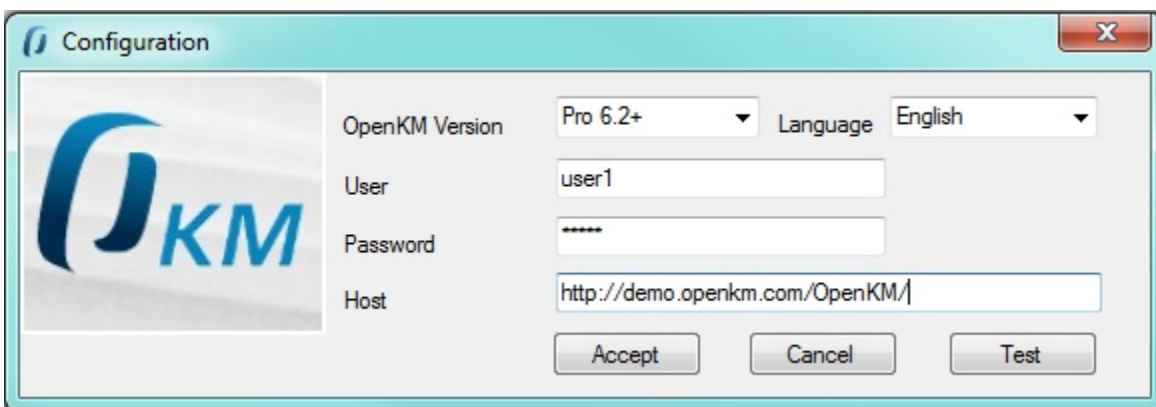


### Configuration

Choose **File / Configuration** menu option to show the configuration popup.

Configuration parameters available are:

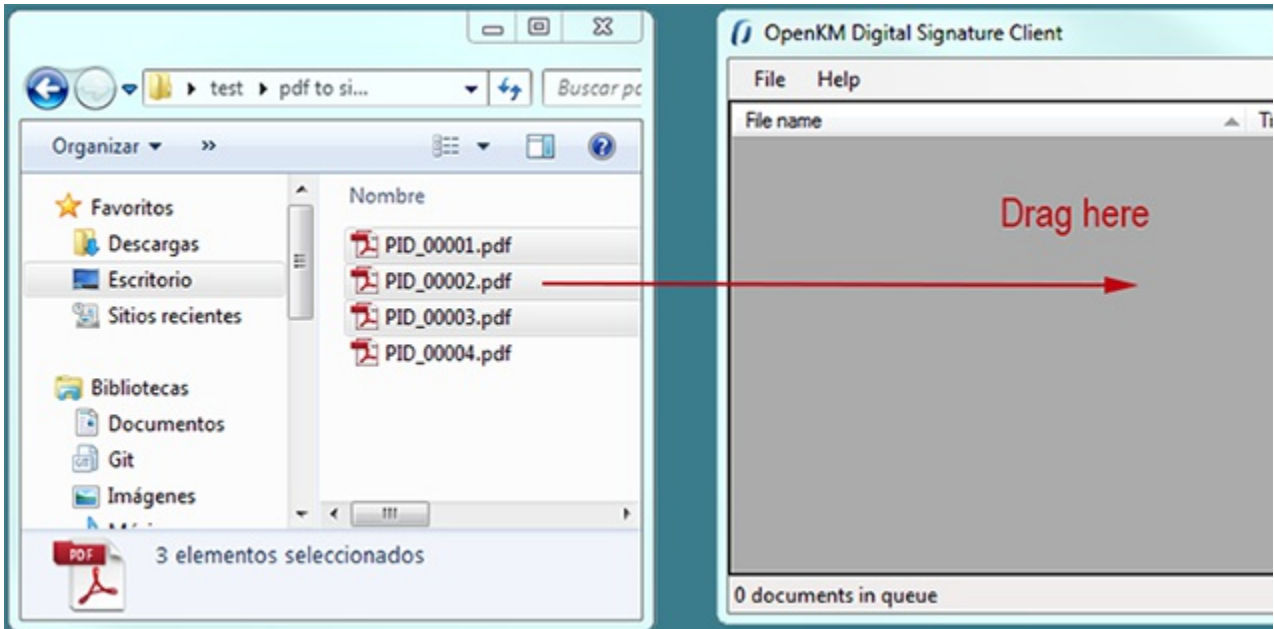
- OpenKM version which client connects to.
- User interface language
- User and password to connect
- The OpenKM server host



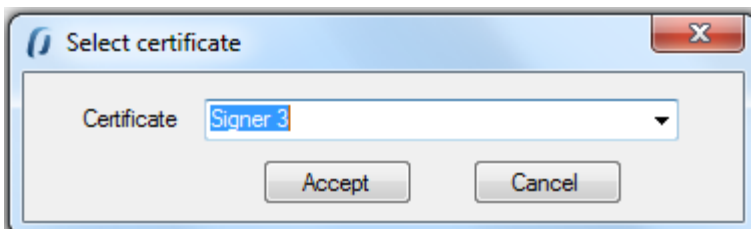
To accept configuration parameters changes, click **Accept** button.

## Sign and upload documents

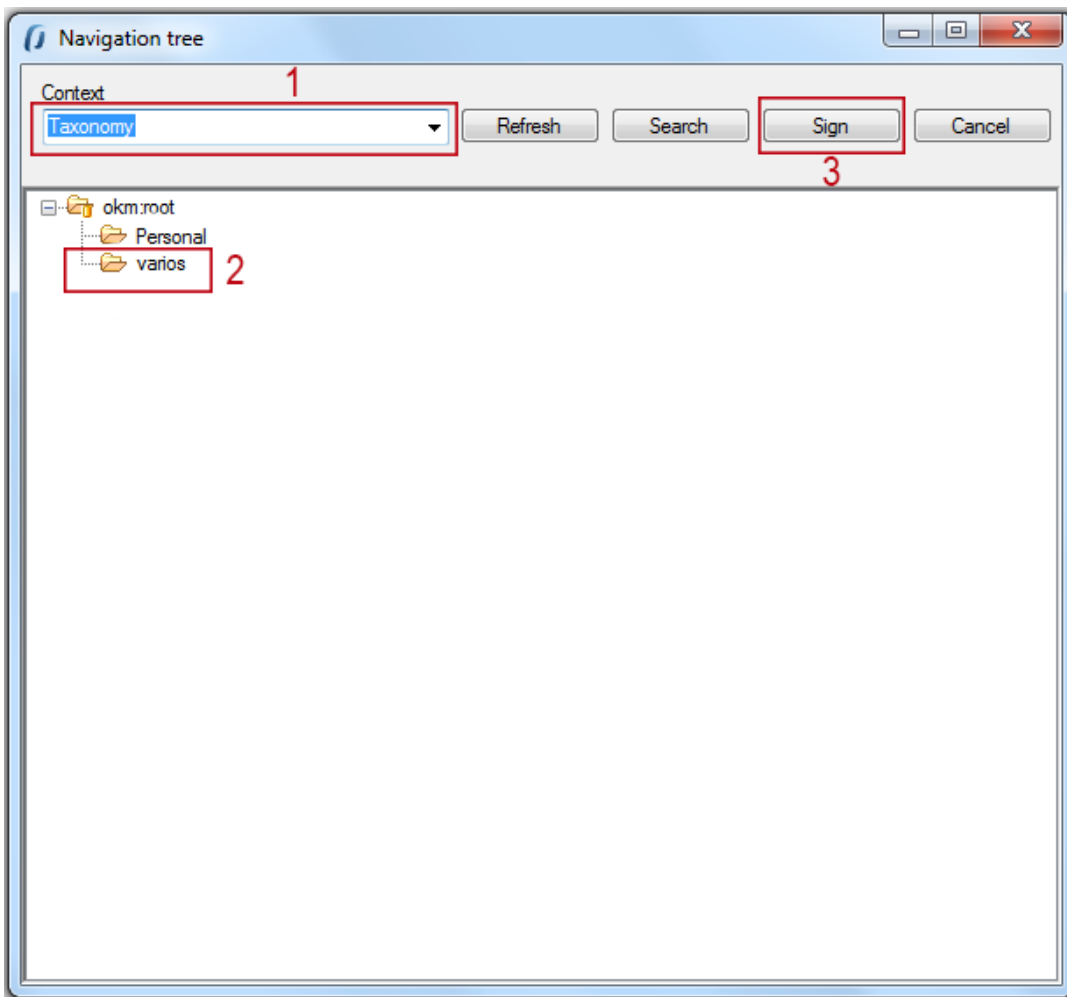
To sign documents, **select some files or folders with files into and drag** to Digital Signature Client.



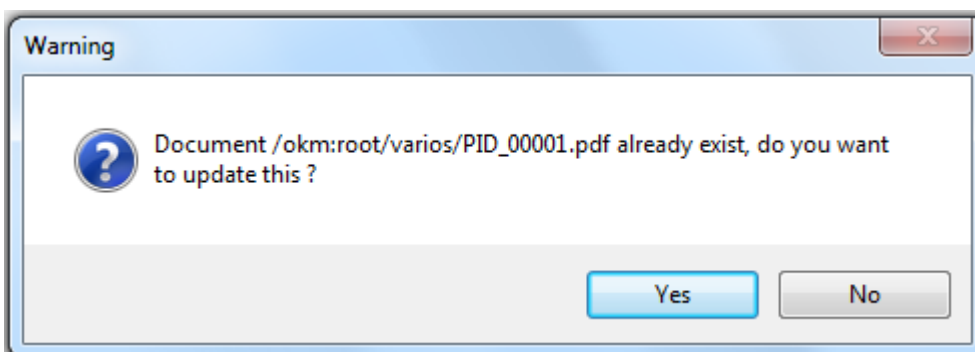
Will be shown a popup to **choose the certificate** what will be used to sign documents. **Choose a certificate** and click **Accept** button.



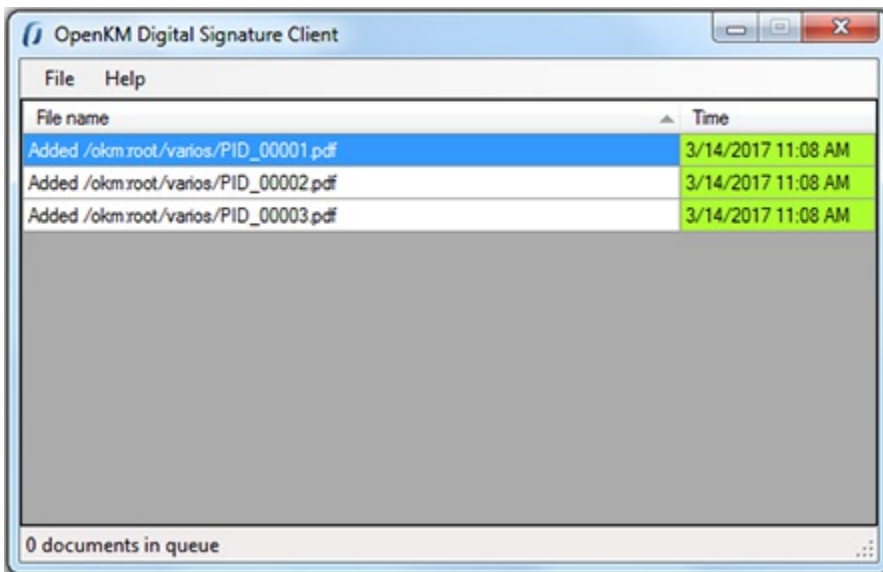
Finally, will be shown a navigator popup to **select documents folder destination**. **Select a folder with write access** ( for your user ) and click **Sign** button.



When Digital Signature Client detects an existing document with the same name into OpenKM is prompt a popup to choose one of these two options, updated the file or skip it.

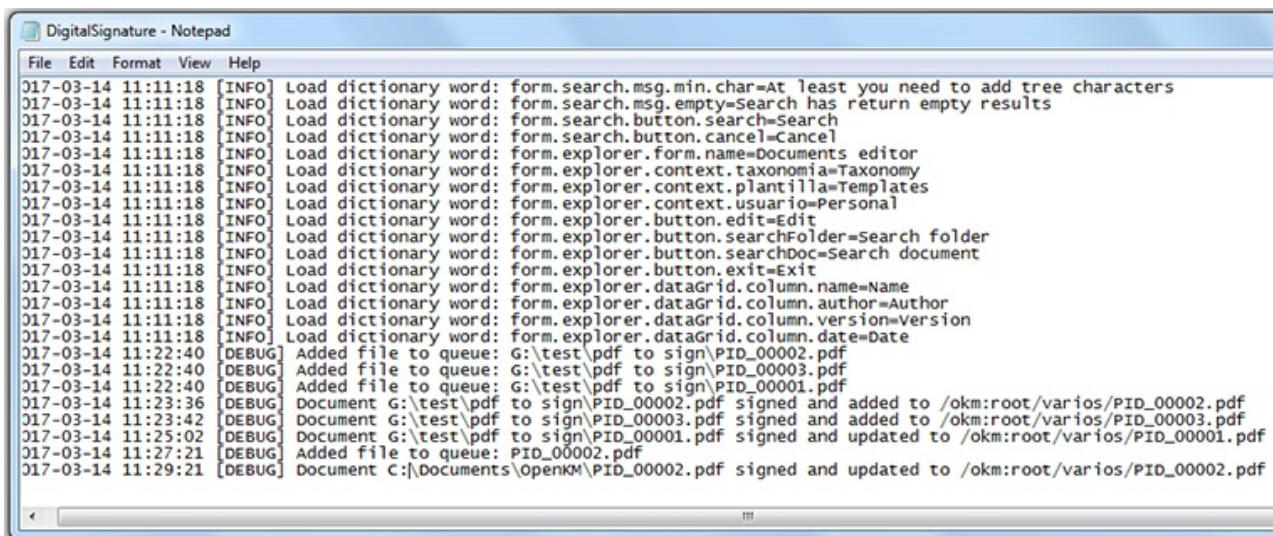


Information about signing and uploading process is shown in Digital Signature Client main table.



## Log

In **My Documents/OpenKM** there's a file log called `DigitalSignature.log` with a complete log trace.



## Change log of version 3.x

---

### Digital Signature Tool 3.x

#### v3.6

- Released 2020-04-17
- Update OKMRest version 3.7.0 (compatible with OpenKM version 7.1.11 and upper)

#### v3.5

- Released 2020-02-18
- Update OKMRest version 3.6.0 (compatible with OpenKM version 7.1.9 and upper)

#### v3.4

- Released 2019-11-25
- Update OKMRest version 3.5.0.

#### v3.3

- Released 2019-04-05
- Bugs
  - Validation of the host URL for methods using System.Net.Http in the SDK to .net.

#### v3.2

- Released 2019-02-11
- Update OKMRest version 3.1:
  - Replacement of objects with the name "XXXList", by lists directly (List<T>).

#### v3.1

- Released 2019-01-24
- Allow select multiple in metadata fields.
- Authentication by Token.

---

## Change log of version 2.x

---

### Digital Signature Tool 2.x

#### v 2.4.2

- Released 2019-04-09
- Bugs
  - Validation of the host URL for methods using System.Net.Http in the SDK to .net.

#### v 2.4.1

- Released 2018-11-16
- Updated tools:
  - Net Framework 4.5.2
- Bug SDK:
  - Upload, download and update large files. Affected methods: createDocumetSimple, getContent and check-in.

#### v 2.4

- Released 2018-09-14
- Update:
  - OKMRest version 2.6.0

#### v 2.3

- Released 2017-10-04
- Explorer Form:
  - Add a signature icon to a new table column.
- Bug:
  - Mark the document assigned when uploading or editing a document.

#### v 2.2

- Released 2017-09-18
- Server Configuration:
  - Improve the portion of how translations are loaded.
- Main form:
  - Change of images and the main icon.

#### v 2.1



- Released 2016-10-28
- File Menu:
  - Add functionality to sign documents within OpenKM.

**v 2.0**

- Released 2016-05-02.
- Server Configuration:
  - Implements OKMRest (Remove field OpenKM Version)

## Change log of version 1.x

---

### Digital Signature Tool 1.x

#### v 1.1.0

- Released 2018-11-15
- Updated tools:
  - Net Framework 4.5.2
  - Use Rest Service
- Bug SDK:
  - Upload, download and update large files. Affected methods: createDocumetSimple, getContent and check-in.

## Language pack

The application can work with several languages, there are set the languages terms definitions.



Sometimes translations are not fully completed and some terms are missing. The "en-GB" is used to identify which are the missing terms and how many are.

When a term is missing in other languages the "en-GB" term is used in its place.



en-GB translation cannot be removed.

## Spanish translation

```
# Main menu
mainmenu.file=Fichero
mainmenu.configuration=Configuración
mainmenu.exit=Salir
mainmenu.help=Ayuda
mainmenu.about=Sobre OpenKM Cliente de firma electrónica

# Drag & drop table
table.file=Nombre
table.date=Hora
table.file.adding=Añadiendo
table.file.added=añadido
table.file.error=Error
table.file.skip=Omitido
table.file.update=Actualizado

# Button
button.accept=Aceptar
button.cancel=Cancelar
button.close=Cerrar
button.search=Buscar
button.refresh=Refrescar

# Application forms
form.main.title=OpenKM Cliente de firma electrónica
form.main.queue.status={0} documentos en la cola
form.certificate.title=Seleccionar certificado
form.certificate=Certificado

# Application messages
message.alert.message=En proceso, por favor espere...
message.change.certificate=Cambiar el certificado
message.change.certificate.question=¿ Desea cambiar el certificado seleccionado {0} ?
message.change.path=Cambiar la ruta de destino
message.change.path.question=¿ Desea cambiar la ruta de destino {0}?
message.change.existing.document= ¿ El documento {0} ya existe, desea actualizarlo ?
message.wait.until.finish=No puede añadir más fichero mientras el proceso de firma no
message.warning.title=Aviso
message.required=Obligatorio
message.required.field=Faltan llenar campos.

# Form configuration
form.configuration.name=Configuracion
form.configuration.language=Idioma
```

```
form.configuration.version=Versión de OpenKM
form.configuration.userName=Usuario
form.configuration.password=Clave
form.configuration.host=Host
form.configuration.error.msg=El campo {0} no puede ser vacío
form.configuration.button.accept=Aceptar
form.configuration.button.cancel=Cancelar
form.configuration.button.test=Prueba
form.configuration.test.ok=Conexión establecida con éxito
form.configuration.test.error=La prueba de conexión ha fallado!!!

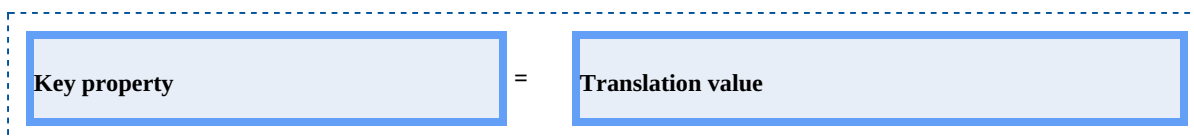
# Form tree
form.tree.title=Navegador
form.tree.context.root=Taxonomía
form.tree.context.templates=Plantillas
form.tree.context.personal=Personal
form.tree.contextmenu.newfolder=Nueva carpeta
form.tree.contextmenu.renamefolder=Renombrar carpeta
form.tree.contextmenu.deletefolder=Eliminar carpeta
form.tree.button.accept=Firmar
form.tree.input.title=Gestión de carpetas
form.tree.button.refresh=Refrescar
form.tree.button.search=Buscar
form.tree.button.cancel=Cancelar
form.tree.msg.foldername.empty=Error, el nombre de la carpeta está vacío

# Form search
form.search.title=Buscar
form.search.msg.min.char=Como mínimo debe escribir 3 caracteres
form.search.msg.empty=La consulta no ha devuelto ningún resultado
form.search.button.search=Buscar
form.search.button.cancel=Cancelar

# Explorer form
form.explorer.form.name=Editor de documentos
form.explorer.context.taxonomia=Taxonomía
form.explorer.context.plantilla=Templarios
form.explorer.context.usuario=Personal
form.explorer.button.edit=Editar
form.explorer.button.searchFolder=Buscar directorio
form.explorer.button.searchDoc=Buscar documento
form.explorer.button.exit=Salir
form.explorer.button.select=Firmar
form.explorer.dataGrid.column.name=Nombre
form.explorer.dataGrid.column.author=Autor
form.explorer.dataGrid.column.version=Versión
form.explorer.dataGrid.column.date=Fecha
```

## Create a new language

Language translations are displayed with the following structure.



To **create** a file with a new **language**, follow these steps:

1. Creates a new text document named **OKMDigitalSignature-xxXX** with the **.properties** extension, where **xxXX** refers to the **language identifier** (ISO 639).

For example in the case of the Spanish language, it would be esES ( in English is enGB ), that means the file must be named **OKMDigitalSignature-esES.properties**.



More information about [ISO 639](#).

- Copy into the file created the example of the top of the Spanish translation. Each line of text it has sections, the "**Key property**" and "**Translation value**". The first one should not be changed and the second it refers to translated text and is what you should change.

For example:

```
# Configuration form
form.configuration.name=Configuration
form.configuration.language=Language
form.configuration.version=OpenKM Version
...
```

Replace by:

```
# Configuration form
form.configuration.name=Configuración
form.configuration.language=Idioma
form.configuration.version=OpenKM Versión
...
```

- Save the file into **the installation folder**, located in: "C:\Program Files (x86)\OpenKM\OpenKM Digital Signature Client\" or the path you selected for installation.