



Documentation for Virtual printer

Table of Contents

| | |
|--------------------------------|----|
| Table of Contents | 2 |
| Virtual printer | 3 |
| License | 3 |
| Printer tool 3.x compatibility | 3 |
| Printer tool 2.x compatibility | 3 |
| Download | 4 |
| Requirements | 5 |
| User guide 3.x | 6 |
| Configuration | 6 |
| Print and upload | 7 |
| User guide 2x | 10 |
| Configuration | 10 |
| Print and upload | 11 |
| Troubleshooting | 14 |
| After installing | 14 |
| Uninstall | 14 |
| Changelog v3.x | 15 |
| Virtual Printer Tool | 15 |
| v3.7 | 15 |
| v3.6 | 15 |
| v3.5 | 15 |
| v3.4 | 15 |
| v3.3 | 15 |
| v3.2 | 15 |
| v3.1 | 15 |
| Changelog v2.x | 17 |
| Virtual Printer Tool | 17 |
| v2.3 | 17 |
| v2.2 | 17 |
| v2.1 | 17 |
| Language pack | 18 |
| Spanish translation | 18 |
| Create a new language | 19 |
| = | 19 |

Virtual printer

Printer tool allows the user to print documents in PDF format and upload to OpenKM.

License



Printer tool for WINDOWS is licensed under the terms of the [EULA - OpenKM End User License Agreement](#) as published by OpenKM Knowledge Management System S.L.

This program is distributed WITHOUT ANY WARRANTY; without even the implied warranty of MERCHANTABILITY or FITNESS FOR A PARTICULAR PURPOSE. See the [EULA - OpenKM End User License Agreement](#) for more details.

Printer tool 3.x compatibility

| App version | OpenKM Compatibility | | Status |
|-------------|---------------------------|-----------------|-------------|
| | Professional | Community | |
| 3.7 | Version 7.1.11 and upper. | Not compatible. | Active. |
| 3.6 | Version 7.1.9 and upper. | Not compatible. | Deprecated. |
| 3.5 | Version 7.1.8 and upper. | Not compatible. | Deprecated. |
| 3.4 | Version 7.1.5 and upper. | Not compatible. | Deprecated. |
| 3.3 | Version 7.1.4 and upper. | Not compatible. | Deprecated. |
| 3.2 | Version 7.1.4 and upper. | Not compatible. | Deprecated. |
| 3.1 | Version 7.1.3 and upper. | Not compatible. | Deprecated. |
| 3.0 | Version 7.1.2 and upper. | Not compatible. | Deprecated. |

Printer tool 2.x compatibility

| App version | OpenKM Compatibility | | Status |
|-------------|---------------------------|-----------------|-------------|
| | Professional | Community | |
| 2.3 | Version 6.4.45 and upper. | Not compatible. | Active |
| 2.2 | Version 6.4.45 and upper. | Not compatible. | Deprecated. |
| 2.1 | Version 6.4.45 and upper. | Not compatible. | Deprecated. |
| 2.0 | Version 6.4.45 and upper. | Not compatible. | Deprecated. |

Download

- OpenKM Printer Tool 3.7 is available at [Download center](#).
- OpenKM Printer Tool 3.6 is available at [Download center](#).
- OpenKM Printer Tool 3.5 is available at [Download center](#).
- OpenKM Printer Tool 3.4 is available at [Download center](#).
- OpenKM Printer Tool 3.3 is available at [Download center](#).
- OpenKM Printer Tool 3.2 is available at [Download center](#).
- OpenKM Printer Tool 3.1 is available at [Download center](#).
- OpenKM Printer Tool 3.0 is available at [Download center](#).
- OpenKM Printer Tool 2.3 is available at [Download center](#).
- OpenKM Printer Tool 2.2 is available at [Download center](#).
- OpenKM Printer Tool 2.1 is available at [Download center](#).

Requirements

Before running the application be sure you get installed Visual C++ Redistributable for Visual Studio.

- Visual C++ Redistributable for Visual Studio 2012 ([x86 or x64](#)) (Recommended).
- Windows installer 4.5.
- NET Framework 4.5.2 ([x86 or x64](#)).



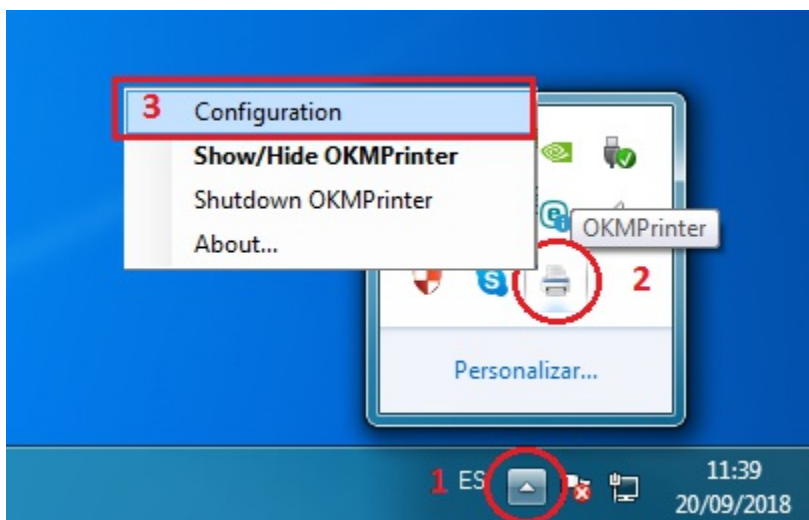
To **install** you must **run** "*setup.exe*" as **administrator**.

User guide 3.x

Printer Tool allows the user to print documents in PDF format and upload to OpenKM.


Configuration

1. Go to the notification area of the windows taskbar.
2. Click the right button of the Mouse on the OKMPrinter icon.
3. Go to the "Configuration" option.



First, you must choose the **Configuration** menu item to set your configuration values:

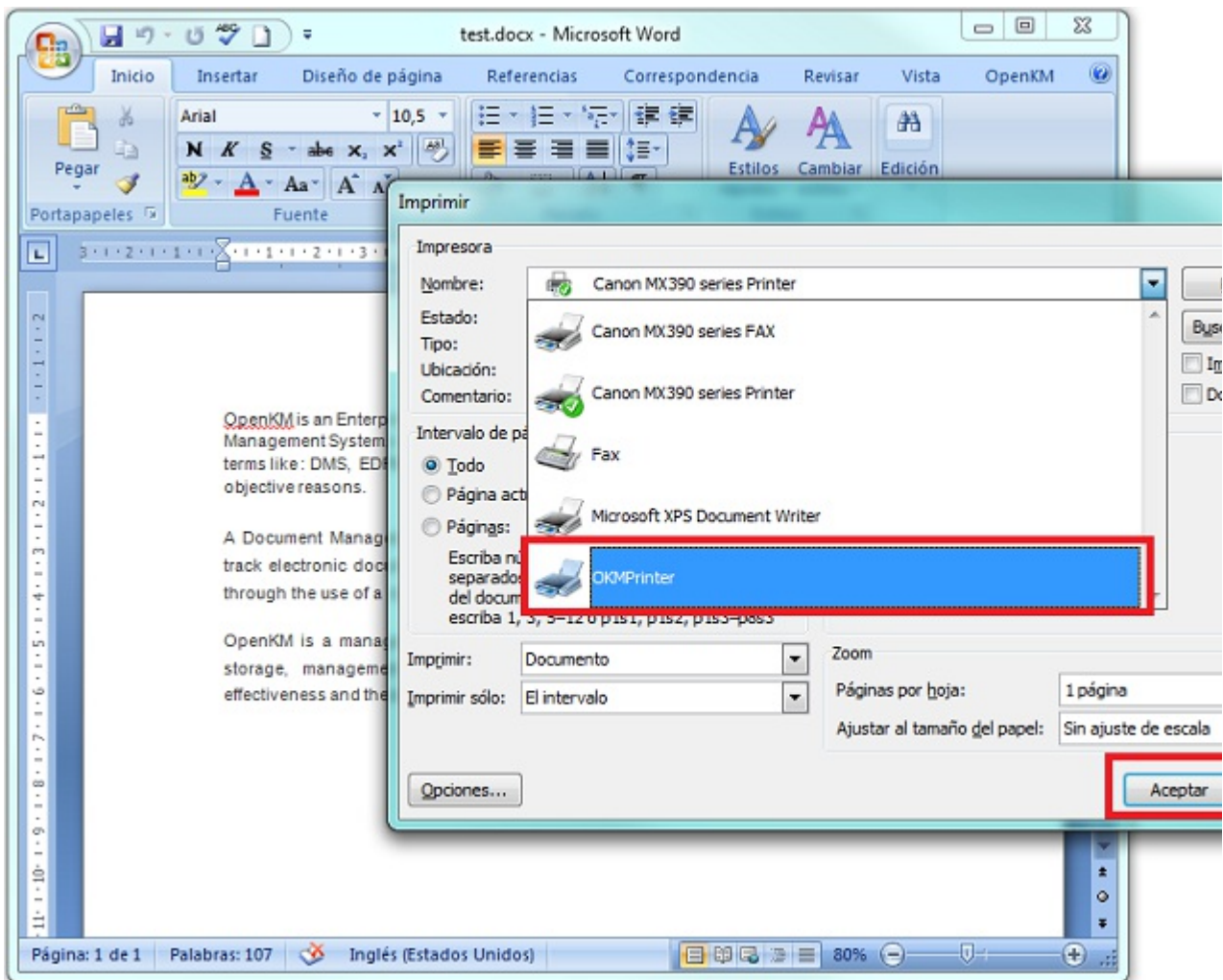
| Property | Type | Description |
|-----------------|---------------|---|
| Language | Select | User interface language. |
| User | String | User id for accessing OpenKM. <input type="text" value="user1"/> |
| Password | String | The password of the user. <input type="text" value="pass1"/> |
| Host | String | OpenKM URL. <input type="text" value="https://demo.openkm.com/OpenKM/"/> |
| | | |

| | | |
|-------------------------------|---------------|---|
| Request path to upload | Bool | When it is enabled, the user will be asked if he want to change default destination path. |
| Default path to upload | String | Set default destination path. <div style="border: 1px dashed #00aaff; border-radius: 10px; padding: 5px; margin-top: 10px;"> Option enabled when "Request path to upload" option is disabled.</div> |

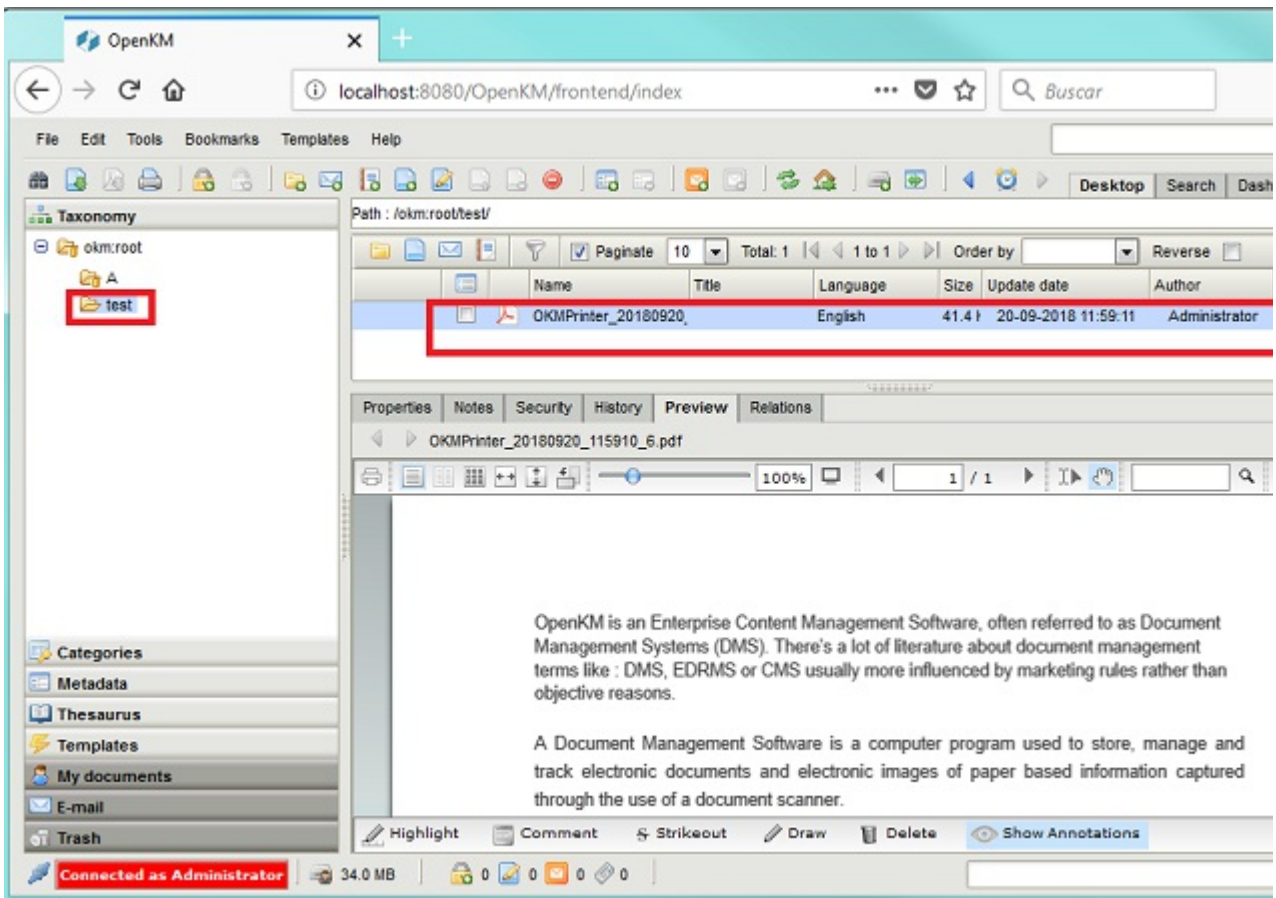
After you set your configuration values, a folder called **OpenKM** is created in your user **My documents folder**. In this OpenKM folder, a configuration there's a file named **openkm.xml**

Print and upload

1. Open a document from any application.
2. Print the document.
3. Choose the "**OKMPrinter**" as the destination printer.
4. The application will shown a message "**The document has been successfully uploaded**", to indicate the process is finished.



The document uploaded will be saved with the pattern: "**OKMPrinter_YearMonthDay_Hour.pdf**".

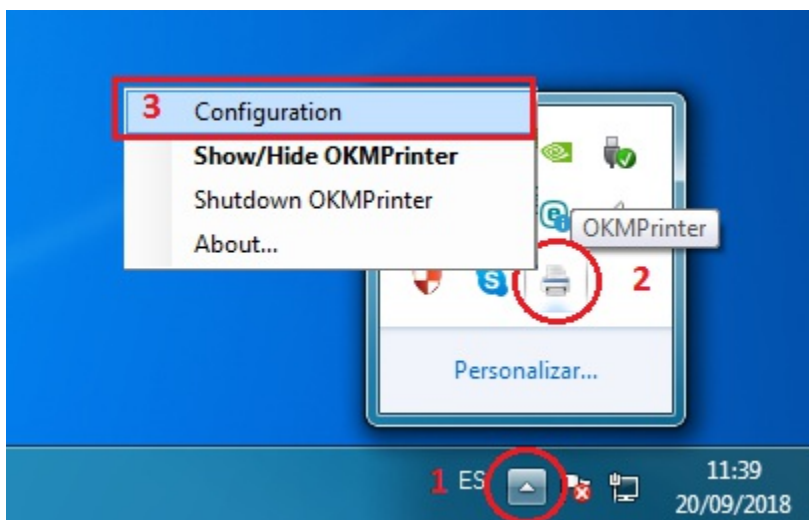


User guide 2x

Printer Tool allows the user to print documents in PDF format and upload to OpenKM.


Configuration

1. Go to the notification area of the windows taskbar.
2. Click the right button of the Mouse on the OKMPrinter icon.
3. Go to the "Configuration" option.



First, you must choose the **Configuration** menu item to set your configuration values:

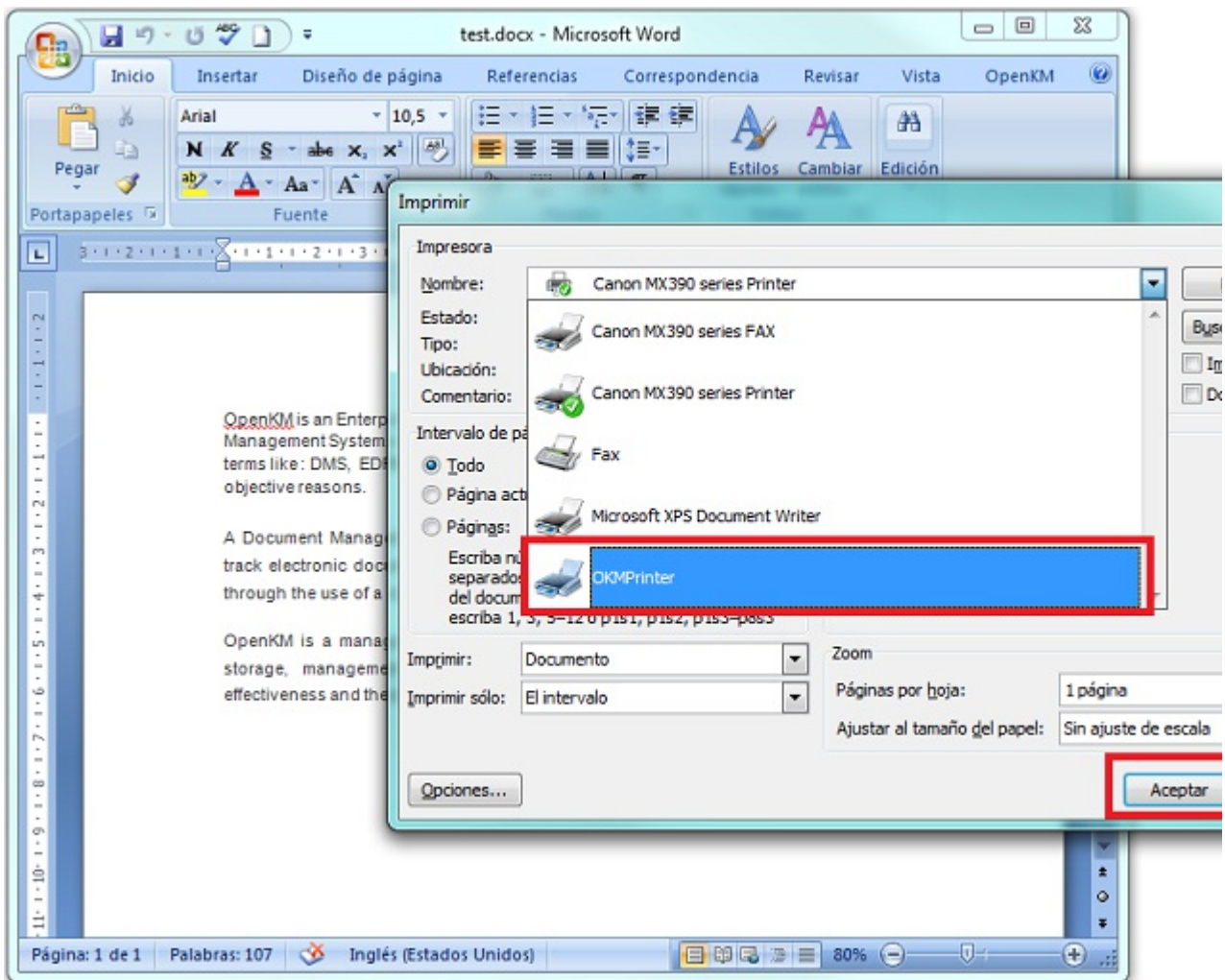
| Property | Type | Description |
|-----------------|---------------|---|
| Language | Select | User interface language. |
| User | String | User id for accessing OpenKM. <input type="text" value="user1"/> |
| Password | String | The password of the user. <input type="text" value="pass1"/> |
| Host | String | OpenKM URL. <input type="text" value="https://demo.openkm.com/OpenKM/"/> |
| | | |

| | | |
|-------------------------------|---------------|---|
| Request path to upload | Bool | When it is enabled, the user will be asked if he want to change default destination path. |
| Default path to upload | String | Set default destination path. <div style="border: 1px dashed #00aaff; border-radius: 10px; padding: 5px; margin-top: 10px;"> Option enabled when "Request path to upload" option is disabled.</div> |

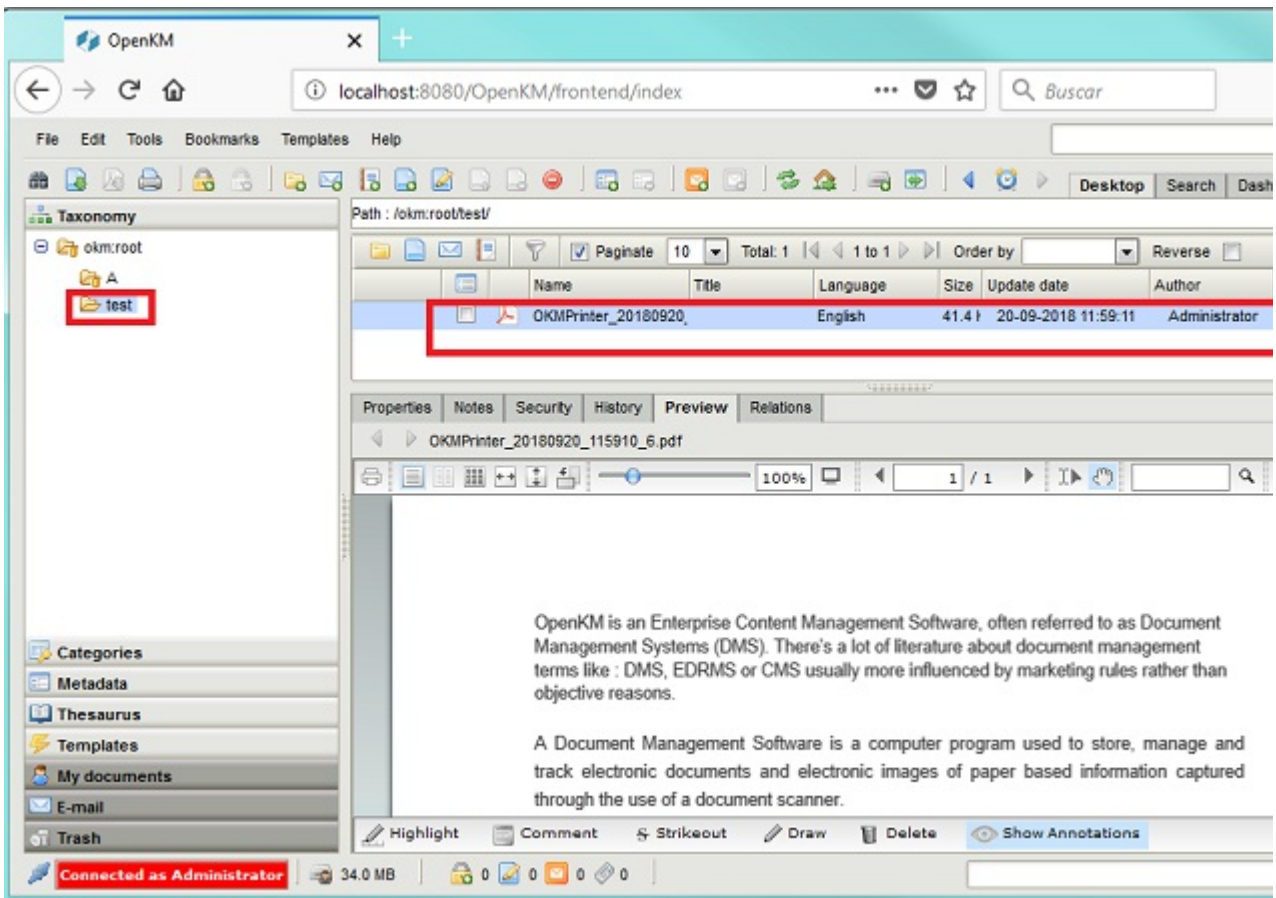
After you set your configuration values, a folder called **OpenKM** is created in your user **My documents folder**. In this OpenKM folder, a configuration there's a file named **openkm.xml**

Print and upload

1. Open a document from any application.
2. Print the document.
3. Choose the "**OKMPrinter**" as the destination printer.
4. The application will shown a message "**The document has been successfully uploaded**", to indicate the process is finished.



The document uploaded will be saved with the pattern: "OKMPrinter_YearMonthDay_Hour.pdf".



Troubleshooting

After installing



After installing the Printer Tool, because the OKMPrinter daemon is not started, is mandatory to restarting the operating system for proper operation.

Uninstall

Steps to **uninstall** the application correctly:

1. Go to the **Control Panel**, select the **Uninstall a program** option.
2. Look in the list for the application "**OKMPrinterSetup**" or "**OKMPrinterSetup_x64**" depending on the architecture of your operating system, and **uninstall** it.
3. Select the "**Automatically close applications and attempt to restart them after setup is complete**" option and press the "**OK**" button.
4. Go to the **Control Panel** and select the "**See devices and printers**" option.
5. Click the right button of the Mouse on the **OKMPrinter icon**, select the "**Remove device**" option and give "**Yes**" to the pop-up message.

Changelog v3.x

Virtual Printer Tool

v3.7

- Released 2020-04-17
- Update OKMRest version 3.7.0 (compatible with OpenKM version 7.1.11 and upper)

v3.6

- Released 2020-02-18
- Update OKMRest version 3.6.0 (compatible with OpenKM version 7.1.9 and upper)
- Compatible with Chrome version 80.

v3.5

- Released 2019-11-25
- Update OKMRest version 3.5.0.

v3.4

- Released 2019-09-06
- Bugs
 - Validate the name of the file when uploading, to avoid characters not allowed.

v3.3

- Released 2019-04-05
- Allows changing the document name when uploading to the repository.
- It allows you to update an existing document.
- Bugs
 - Validation of the host URL for methods using System.Net.Http in the SDK to .net.

v3.2

- Released 2019-02-11
- Update OKMRest version 3.1:
 - Replacement of objects with the name "XXXList", by lists directly (List<T>).

v3.1

- Released 2019-01-24

- Allow select multiple in metadata fields.
- Authentication by Token.

Changelog v2.x

Virtual Printer Tool

v2.3

- Released 2020-02-18
- Compatible with Chrome version 80.

v2.2

- Released 2019-04-09
- Allows changing the document name when uploading to the repository.
- Allows you to update an existing document.
- Bugs
 - Validation of the host URL for methods using System.Net.Http in the SDK to .net.

v2.1

- Released 2019-01-24
- Updated tools:
 - Net Framework 4.5.2
- Bug SDK:
 - Upload, download and update large files. Affected methods: createDocumetSimple, getContent and check-in.

Language pack

The application can work with several languages, there are set the languages terms definitions.



Sometimes translations are not fully completed and some terms are missing. The "en-GB" is used to identify which are the missing terms and how many are.

When a term is missing in other languages the "en-GB" term is used in its place.



en-GB translation cannot be removed.

Spanish translation

```
# Main menu
mainmenu.showhide=Mostrar/Ocultar OKMPrinter
mainmenu.shutdown=Apagar OKMPrinter
mainmenu.configuration=Configuración
mainmenu.about=Acerca de...

# Button
button.accept=Aceptar
button.cancel=Cancelar
button.close=Cerrar
button.search=Buscar
button.refresh=Refrescar

# Application messages
form.message.upload.path=Desea subir el documento a la ruta predeterminada
form.message.upload.path.empty=La ruta para subir el documento esta en blanco?
form.message.successful.upload=El documento ha sido subido exitosamente.
form.message.error.connection=No se pudo subir el documento, error de conexion con el
form.message.rename.document=Nombre del documento a subir:
form.message.item.exists=¿El documento ya existe en el repositorio, deseas actualizar.
form.message.cancel.process=Proceso cancelado.
form.message.successful.update=El documento ha sido actualizado exitosamente..
form.message.alert.invalid.characters=El nombre del archivo no puede contener los sig
message.required=Obligatorio
message.required.field=Faltan llenar campos.

# Form configuration
form.configuration.name=Configuracion
form.configuration.language=Idioma
form.configuration.version=Versión de OpenKM
form.configuration.userName=Usuario
form.configuration.password=Clave
form.configuration.host=Host
form.configuration.error.msg=El campo {0} no puede ser vacio
form.configuration.button.accept=Aceptar
form.configuration.button.cancel=Cancelar
form.configuration.button.test=Prueba
form.configuration.test.ok=Conexión establecida con éxito
form.configuration.test.error=La prueba de conexión ha fallado!!!
form.configuration.connection.error=La conexión ha fallado!!!
form.configuration.label.request=Solicitar ruta para subir
form.configuration.label.path=Ruta por defecto

# Form tree
```

```

form.tree.title=Navegador
form.tree.context.root=Taxonomía
form.tree.context.templates=Plantillas
form.tree.context.personal=Personal
form.tree.contextmenu.newfolder=Nueva carpeta
form.tree.contextmenu.renamefolder=Renombrar carpeta
form.tree.contextmenu.deletefolder=Eliminar carpeta
form.tree.button.select=Seleccionar
form.tree.input.title=Gestión de carpetas
form.tree.button.refresh=Refrescar
form.tree.button.search=Buscar
form.tree.button.cancel=Cancelar
form.tree.msg.foldername.empty=Error, el nombre de la carpeta esta vacio

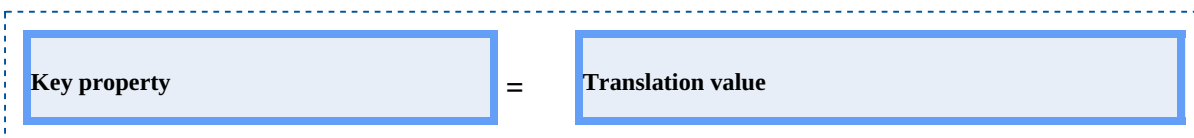
# Form search
form.search.title=Buscar
form.search.msg.min.char=Como mínimo debe escribir 3 caracteres
form.search.msg.empty=La consulta no ha devuelto ningún resultado
form.search.button.search=Buscar
form.search.button.cancel=Cancelar

# Explorer form
form.explorer.form.name=Editor de documentos
form.explorer.context.taxonomia=Taxonomía
form.explorer.context.plantilla=Templarios
form.explorer.context.usuario=Personal
form.explorer.button.edit=Editar
form.explorer.button.searchFolder=Buscar directorio
form.explorer.button.searchDoc=Buscar documento
form.explorer.button.exit=Salir
form.explorer.dataGrid.column.name=Nombre
form.explorer.dataGrid.column.author=Autor
form.explorer.dataGrid.column.version=Versión
form.explorer.dataGrid.column.date=Fecha

```

Create a new language

Language translations are displayed with the following structure.



To **create** a file with a new **language**, follow these steps:

1. Creates a new text document named **OKMPrinter-xxXX** with the **.properties** extension, where **xxXX** refers to the **language identifier** (ISO 639).

For example in the case of the Spanish language, it would be esES (in English is enGB), that means the file must be named **OKMPrinter-esES.properties**.



More information about [ISO 639](#).

2. Copy into the file created the example of the top of the Spanish translation. Each line of text it has sections, the "**Key property**" and "**Translation value**". The first one should not be changed and the second it refers to translated text and

is what you should change.

For example:

```
# Configuration form
form.configuration.name=Configuration
form.configuration.language=Language
form.configuration.version=OpenKM Version
...
```

Replace by:

```
# Configuration form
form.configuration.name=Configuración
form.configuration.language=Idioma
form.configuration.version=OpenKM Versión
...
```

3. Save the file into **OKMPrinter folder**, located in "**C:\OKMPrinter**".